

CORE PINS

120 Z-49 CORE PIN

Página

I-22

119 "Z" CORE PIN

I-21

EJECTOR PINS

101 EJECTOR PIN DIN 1530 TYPE "A" Black nitrided

I-01

113 EJECTOR PIN DIN 1530 TYPE "AP" Black nitrided

I-02

133 EJECTOR PIN BRIGHT NITRIDED TYPE "FIAT"

I-04

100 EJECTOR NON NITRIDED SIM. DIM ISO 5751 CORE PINS

I-03

115 EJECTOR PIN DIN 1530 TYPE "A" COPPER

I-09

114 EJECTOR PIN DIN 1530 TYPE "AHSS"

I-08

102 EJECTOR PIN DIN 1530 TYPE "AH" Through hardened

I-05

103 STEPPED EJECTOR PIN DIN 1530 TYPE "C" Black/Bright Nitrided

I-10

104 STEPPED EJECTOR PIN DIN 1530 TYPE "CH" Through hardened

I-11

105 EJECTOR PIN DIN 1530 TYPE "D" COUNTERSUNK HEAD Through hardened

I-06-07

108 EJECTOR SLEEVE DIN 16756 TYPE "ET" Hardened

I-15

109 EJECTOR SLEEVE DIN 16756 TYPE "ETN" Black nitrided

I-16

116 EJECTOR SLEEVE DIN 16756 TYPE "ETP" Bright nitrided

I-17-18

117 STEPPED EJECTOR SLEEVE TYPE "ETC" Hardened/Nitrided

I-19

118 HEADLESS EJECTOR SLEEVE TYPE "ETS" Black/Bright nitrided

I-20

106 FLAT EJECTOR PIN DIN 1530 TYPE "LA" Through hardened

I-12

107 FLAT EJECTOR PIN DIN 1530 TYPE "LAN" Black/Bright nitrided

I-13-14

SPRINGS

111 BELLEVILLE SPRINGS DIN 2093

I-33

110 DIE SPRINGS. Light Load

I-23-25

110 DIE SPRINGS. Medium Load

I-26-28

110 DIE SPRINGS. Heavy Load

I-29-30

110 DIE SPRINGS. Extra-heavy Load

I-31-32

124 NEOPRENE SPRINGS "TNP"

I-36

123 POLYURETHANE SPRINGS "BAP"

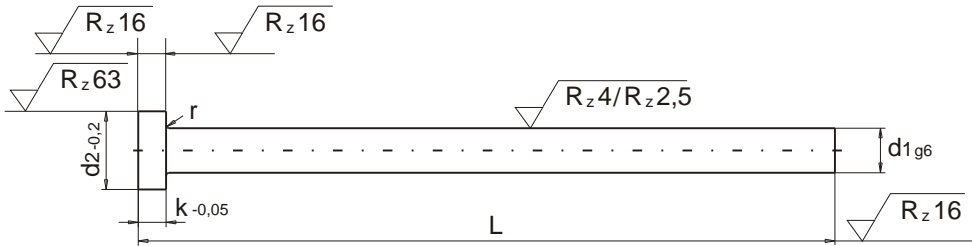
I-35

122 POLYURETHANE SPRINGS "TAP"

I-34



EXPULSOR NITRURADO FORMA "A" DIN 1530 / ISO 6751
EJECTOR PIN BLACK NITRIDED TYPE "A" DIN 1530 / ISO 6751

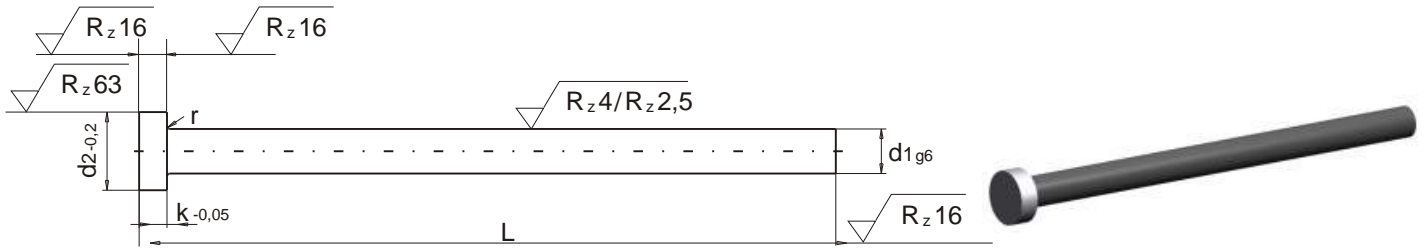


EJECUCION: Cabeza estampada en caliente y rectificada. Caña (d1) templada y rectificada.
VERSION: Cylindrical head hot folded. Shaft fine ground finished and nitrided (g6)
MATERIAL: MATERIAL: Nº 1.2344. Designación DIN X40CrMoV51. Nº 1.2344. DIN X40CrMoV51.
TRATAMIENTO: TREATMENT : Nitruración por el procedimiento TENIFER. Dip Nitrided.
DUREZA CAÑA: SHAFT HARDNESS: Superficie : 70 Hrc. Surface : 70 Hrc.
 Núcleo : 40-45 Hrc. Core: 40 - 45 HRc.
DUREZA CABEZA: HEAD HARDNESS : 45±5 Hrc.
RESISTENCIA DEL NUCLEO A LA TRACCION: CORE RIGIDITY: Núcleo Core: 150 Kp/mm2.
TEMPERATURA DE TRABAJO: TEMPER RESISTANCE : Hasta 650º C. At least 650º C

d1 g6	d2 -0,2	K -0,05	r	L +2													
				100	125	160	200	250	315	400	500	630	800	1000	1250	1400	
1,0	2,5	1,2	0,2	*	*	*	*										
2,0	4,0	2,0	0,2	*	*	*	*	*	*								
2,2	4,0	2,0	0,2	*	*	*	*	*	*								
2,5	5,0	2,0	0,3	*	*	*	*	*	*								
2,7	5,0	2,0	0,3	*	*	*	*	*	*								
3,0	6,0	3,0	0,3	*	*	*	*	*	*	*							
3,2	6,0	3,0	0,3	*	*	*	*	*	*	*							
3,5	7,0	3,0	0,3	*	*	*	*	*	*	*							
3,7	7,0	3,0	0,3	*	*	*	*	*	*	*							
4,0	8,0	3,0	0,3	*	*	*	*	*	*	*	*						
4,2	8,0	3,0	0,3	*	*	*	*	*	*	*	*						
4,5	8,0	3,0	0,3	*	*	*	*	*	*	*	*						
5,0	10,0	3,0	0,3	*	*	*	*	*	*	*	*	*					
5,2	10,0	3,0	0,3	*	*	*	*	*	*	*	*	*					
5,5	10,0	3,0	0,3	*	*	*	*	*	*	*	*	*					
6,0	12,0	5,0	0,5	*	*	*	*	*	*	*	*	*	*				
6,2	12,0	5,0	0,5	*	*	*	*	*	*	*	*	*	*				
6,5	12,0	5,0	0,5	*	*	*	*	*	*	*	*	*	*				
7,0	12,0	5,0	0,5	*	*	*	*	*	*	*	*	*	*				
7,5	12,0	5,0	0,5	*	*	*	*	*	*	*	*	*	*				
8,0	14,0	5,0	0,5	*	*	*	*	*	*	*	*	*	*	*			
8,2	14,0	5,0	0,5	*	*	*	*	*	*	*	*	*	*	*			
8,5	14,0	5,0	0,5	*	*	*	*	*	*	*	*	*	*	*			
9,0	14,0	5,0	0,5	*	*	*	*	*	*	*	*	*	*	*			
10,0	16,0	5,0	0,5	*	*	*	*	*	*	*	*	*	*	*	*		
10,2	16,0	5,0	0,5	*	*	*	*	*	*	*	*	*	*	*	*		
10,5	16,0	5,0	0,5	*	*	*	*	*	*	*	*	*	*	*	*		
11,0	16,0	5,0	0,8	*	*	*	*	*	*	*	*	*	*	*	*		
12,0	18,0	7,0	0,8	*	*	*	*	*	*	*	*	*	*	*	*	*	
12,2	18,0	7,0	0,8	*	*	*	*	*	*	*	*	*	*	*	*	*	
12,5	18,0	7,0	0,8	*	*	*	*	*	*	*	*	*	*	*	*	*	
14,0	22,0	7,0	0,8	*	*	*	*	*	*	*	*	*	*	*	*	*	*
16,0	22,0	7,0	0,8	*	*	*	*	*	*	*	*	*	*	*	*	*	*
18,0	24,0	7,0	0,8	*	*	*	*	*	*	*	*	*	*	*	*	*	*
20,0	26,0	8,0	1,0	*	*	*	*	*	*	*	*	*	*	*	*	*	*
25,0	32,0	10,0	1,0					*	*	*	*	*	*	*	*	*	*
32,0	40,0	10,0	1,0					*	*	*	*	*	*	*	*	*	*
40,0	50,0	10,0	1,0					*	*	*	*	*	*	*	*	*	*

FORMA DE PEDIDO: d1 x L
ORDER FORM: d1 x L

EXPULSOR / EJECTOR PIN / DIN 1530 - ISO 6751
NITRURADO BRILLANTE FORMA "AP" / BRIGHT NITRIDED TYPE "AP"

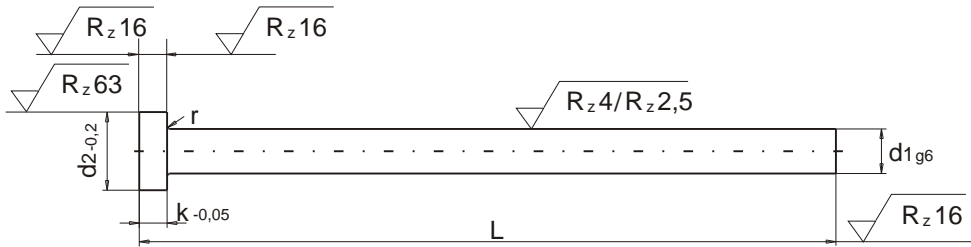


EJECUCION: Cabeza estampada en caliente y rectificada. Caña (d1) templada y rectificada.
VERSION: Cylindrical head hot folded. Shaft fine ground finished and nitrided (g6)
MATERIAL: MATERIAL: Nº 1.2344. Designación DIN X40CrMoV51. Nº 1.2344. DIN X40CrMoV51.
TRATAMIENTO: TREATMENT : Nitruración al gas. Gas/plasma nitrided
DUREZA CAÑA: SHAFT HARDNESS: Superficie : 70 Hrc. Surface : 70 Hrc.
 Núcleo : 40-45 Hrc. Core: 40 - 45 Hrc.
DUREZA CABEZA: HEAD HARDNESS : 45±5 Hrc.
RESISTENCIA DEL NUCLEO A LA TRACCION: CORE RIGIDITY: Núcleo Core: 150 Kp/mm2.
TEMPERATURA DE TRABAJO: TEMPER RESISTANCE : Hasta 650º C. At least 650º C

d1 g6	d2 -0,2	K -0,05	r	L+2													
				100	125	160	200	250	315	400	500	630	800	1000	1250		
1,0	2,5	1,2	0,2	*	*	*	*										
2,0	4,0	2,0	0,2	*	*	*	*	*	*								
2,2	4,0	2,0	0,2	*	*	*	*	*	*								
2,5	5,0	2,0	0,3	*	*	*	*	*	*								
2,7	5,0	2,0	0,3	*	*	*	*	*	*								
3,0	6,0	3,0	0,3	*	*	*	*	*	*	*	*						
3,2	6,0	3,0	0,3	*	*	*	*	*	*	*	*						
3,5	7,0	3,0	0,3	*	*	*	*	*	*	*	*						
3,7	7,0	3,0	0,3	*	*	*	*	*	*	*	*						
4,0	8,0	3,0	0,3	*	*	*	*	*	*	*	*	*	*				
4,2	8,0	3,0	0,3	*	*	*	*	*	*	*	*	*	*				
4,5	8,0	3,0	0,3	*	*	*	*	*	*	*	*	*	*				
5,0	10,0	3,0	0,3	*	*	*	*	*	*	*	*	*	*	*	*		
5,2	10,0	3,0	0,3	*	*	*	*	*	*	*	*	*	*	*	*		
5,5	10,0	3,0	0,3	*	*	*	*	*	*	*	*	*	*	*	*		
6,0	12,0	5,0	0,5	*	*	*	*	*	*	*	*	*	*	*	*	*	
6,2	12,0	5,0	0,5	*	*	*	*	*	*	*	*	*	*	*	*	*	
6,5	12,0	5,0	0,5	*	*	*	*	*	*	*	*	*	*	*	*	*	
7,0	12,0	5,0	0,5	*	*	*	*	*	*	*	*	*	*	*	*	*	
7,5	12,0	5,0	0,5	*	*	*	*	*	*	*	*	*	*	*	*	*	
8,0	14,0	5,0	0,5	*	*	*	*	*	*	*	*	*	*	*	*	*	*
8,2	14,0	5,0	0,5	*	*	*	*	*	*	*	*	*	*	*	*	*	
8,5	14,0	5,0	0,5	*	*	*	*	*	*	*	*	*	*	*	*	*	
9,0	14,0	5,0	0,5	*	*	*	*	*	*	*	*	*	*	*	*	*	
10,0	16,0	5,0	0,5	*	*	*	*	*	*	*	*	*	*	*	*	*	*
10,2	16,0	5,0	0,5	*	*	*	*	*	*	*	*	*	*	*	*	*	
10,5	16,0	5,0	0,5	*	*	*	*	*	*	*	*	*	*	*	*	*	
11,0	16,0	5,0	0,8	*	*	*	*	*	*	*	*	*	*	*	*	*	
12,0	18,0	7,0	0,8	*	*	*	*	*	*	*	*	*	*	*	*	*	*
12,2	18,0	7,0	0,8	*	*	*	*	*	*	*	*	*	*	*	*	*	
12,5	18,0	7,0	0,8	*	*	*	*	*	*	*	*	*	*	*	*	*	
14,0	22,0	7,0	0,8	*	*	*	*	*	*	*	*	*	*	*	*	*	*
16,0	22,0	7,0	0,8	*	*	*	*	*	*	*	*	*	*	*	*	*	*
18,0	24,0	7,0	0,8	*	*	*	*	*	*	*	*	*	*	*	*	*	*
20,0	26,0	8,0	1,0	*	*	*	*	*	*	*	*	*	*	*	*	*	*
25,0	32,0	10,0	1,0					*	*	*	*	*	*	*	*	*	*
32,0	40,0	10,0	1,0					*	*	*	*	*	*	*	*	*	*
40,0	50,0	10,0	1,0					*	*	*	*	*	*	*	*	*	*

FORMA DE PEDIDO: d1 x L
ORDER FORM: d1 x L

EXPULSOR NO NITRURADO / CORE PIN / ISO 6751
EJECTOR NON NITRIDED SIM. DIM ISO 6751 / CORE PINS



EJECUCION: Cabeza estampada en caliente y rectificada. Caña (d1) templada y rectificada

VERSION: Cylindrical head hot folded. Shaft fine ground finished (g6)

MATERIAL: MATERIAL: Nº 1.2344. Designación DIN X40CrMoV51. Nº 1.2344. DIN X40CrMoV51.

TRATAMIENTO: TREATMENT : Pre Templado. Pre Hardened

DUREZA CAÑA: SHAFT HARDNESS: Superficie : 40-45 Hrc. Surface : 40-45 Hrc.
 Núcleo : 40-45 Hrc. Core: 40 - 45 Hrc.

DUREZA CABEZA: HEAD HARDNESS : 45±5 Hrc.

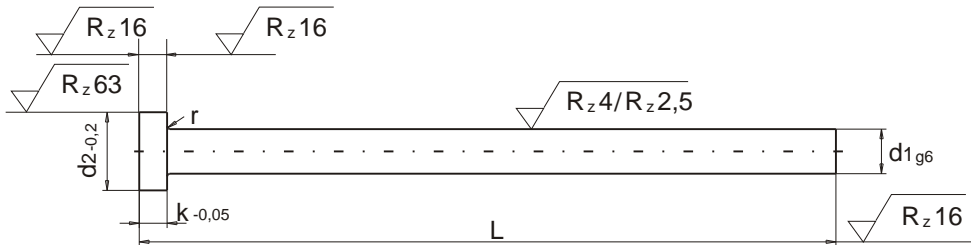
APLICACION: Como noyo o expulsor con formas, por su facil mecanización

APPLICATION: As core pin or profiled ejector pin. Easy machining to any required dimension or shape.

d1 g6	d2 -0,2	K -0,05	r	L+2													
				100	125	160	200	250	315	400	500	630	800	1000	1250	1400	
1,5	3,0	1,5	0,2	*	*	*	*										
2,0	4,0	2,0	0,2	*	*	*	*	*	*								
2,2	4,0	2,0	0,2	*	*	*	*	*	*								
2,5	5,0	2,0	0,3	*	*	*	*	*	*								
2,7	5,0	2,0	0,3	*	*	*	*	*	*								
3,0	6,0	3,0	0,3	*	*	*	*	*	*	*	*						
3,2	6,0	3,0	0,3	*	*	*	*	*	*	*	*						
3,5	7,0	3,0	0,3	*	*	*	*	*	*	*	*						
3,7	7,0	3,0	0,3	*	*	*	*	*	*	*	*						
4,0	8,0	3,0	0,3	*	*	*	*	*	*	*	*	*	*				
4,2	8,0	3,0	0,3	*	*	*	*	*	*	*	*	*	*				
4,5	8,0	3,0	0,3	*	*	*	*	*	*	*	*	*	*				
5,0	10,0	3,0	0,3	*	*	*	*	*	*	*	*	*	*	*	*		
5,2	10,0	3,0	0,3	*	*	*	*	*	*	*	*	*	*	*	*		
5,5	10,0	3,0	0,3	*	*	*	*	*	*	*	*	*	*	*	*		
6,0	12,0	5,0	0,5	*	*	*	*	*	*	*	*	*	*	*	*	*	
6,2	12,0	5,0	0,5	*	*	*	*	*	*	*	*	*	*	*	*	*	
6,5	12,0	5,0	0,5	*	*	*	*	*	*	*	*	*	*	*	*	*	
7,0	12,0	5,0	0,5	*	*	*	*	*	*	*	*	*	*	*	*	*	
7,5	12,0	5,0	0,5	*	*	*	*	*	*	*	*	*	*	*	*	*	
8,0	14,0	5,0	0,5	*	*	*	*	*	*	*	*	*	*	*	*	*	*
8,2	14,0	5,0	0,5	*	*	*	*	*	*	*	*	*	*	*	*	*	*
8,5	14,0	5,0	0,5	*	*	*	*	*	*	*	*	*	*	*	*	*	*
9,0	14,0	5,0	0,5	*	*	*	*	*	*	*	*	*	*	*	*	*	*
10,0	16,0	5,0	0,5	*	*	*	*	*	*	*	*	*	*	*	*	*	*
10,2	16,0	5,0	0,5	*	*	*	*	*	*	*	*	*	*	*	*	*	*
10,5	16,0	5,0	0,5	*	*	*	*	*	*	*	*	*	*	*	*	*	*
11,0	16,0	5,0	0,8	*	*	*	*	*	*	*	*	*	*	*	*	*	*
12,0	18,0	7,0	0,8	*	*	*	*	*	*	*	*	*	*	*	*	*	*
12,2	18,0	7,0	0,8	*	*	*	*	*	*	*	*	*	*	*	*	*	*
12,5	18,0	7,0	0,8	*	*	*	*	*	*	*	*	*	*	*	*	*	*
14,0	22,0	7,0	0,8	*	*	*	*	*	*	*	*	*	*	*	*	*	*
16,0	22,0	7,0	0,8	*	*	*	*	*	*	*	*	*	*	*	*	*	*
18,0	24,0	7,0	0,8	*	*	*	*	*	*	*	*	*	*	*	*	*	*
20,0	26,0	8,0	1,0	*	*	*	*	*	*	*	*	*	*	*	*	*	*
25,0	32,0	10,0	1,0					*	*	*	*	*	*	*	*	*	*
32,0	40,0	10,0	1,0					*	*	*	*	*	*	*	*	*	*
40,0	50,0	10,0	1,0					*	*	*	*	*	*	*	*	*	*

FORMA DE PEDIDO: d1 x L
ORDER FORM: d1 x L

EXPULSOR NITRURADO BRILLANTE TIPO "FIAT" EJECTOR PIN BRIGHT NITRIDED TYPE "FIAT"



EJECUCION: Cabeza estampada en caliente y rectificada. Caña (d1) templada, rectificada y nitrurada
VERSION: Head hot folded. Shaft hardened, fine ground finished (g6) and nitrided.

MATERIAL: MATERIAL: Nº 1.2344. Designación DIN X40CrMoV51. Nº 1.2344. DIN X40CrMoV51.

TRATAMIENTO: TREATMENT : Nitruración al Gas. Gas-plasma Nitrided.

DUREZA CAÑA: SHAFT HARDNESS: Superficie : 70 HRc. Surface : 70 HRc.
Núcleo : 40-45 Hrc. Core: 40 - 45 HRc.

DUREZA CABEZA: HEAD HARDNESS : 45±5 Hrc.

RESISTENCIA DEL NUCLEO A LA TRACCION: CORE RIGIDITY: NUCLEO CORE: 150kP/mm2.

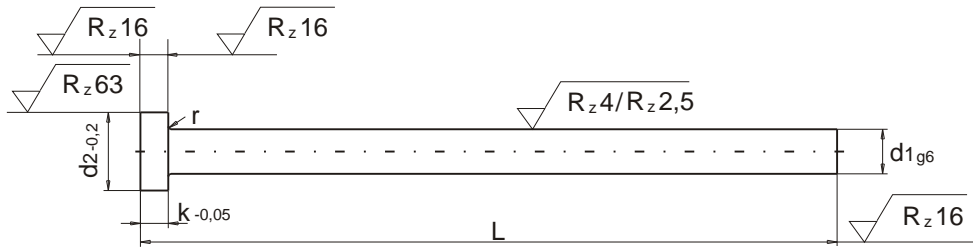
TEMPERATURA DE TRABAJO TEMPER RESISTANCE: Hasta 650º C At least 650º C..

d1 g6	d2 -0,2	K -0,05	r	L +2										
				100	125	160	200	250	315	400	500	630	800	1000
2,0	4,0	2,0	0,2	*	*	*	*	*	*					
2,2	4,0	2,0	0,2	*	*	*	*	*	*					
2,5	5,0	2,0	0,3	*	*	*	*	*	*					
3,0	6,0	3,0	0,3	*	*	*	*	*	*	*	*			
3,2	6,0	3,0	0,3	*	*	*	*	*	*	*	*			
3,5	7,0	3,0	0,3	*	*	*	*	*	*					
4,0	8,0	4,0	0,3	*	*	*	*	*	*					
4,2	8,0	4,0	0,3	*	*	*	*	*	*					
4,5	8,0	4,0	0,3	*	*	*	*	*	*					
5,0	10,0	5,0	0,3	*	*	*	*	*	*	*				
5,5	10,0	5,0	0,3	*	*	*	*	*	*					
6,0	12,0	5,0	0,5	*	*	*	*	*	*	*	*			
6,2	12,0	5,0	0,5	*	*	*	*	*	*	*	*			
6,5	12,0	5,0	0,5	*	*	*	*	*	*	*	*			
7,0	12,0	5,0	0,5	*	*	*	*	*	*	*	*			
7,5	12,0	5,0	0,5	*	*	*	*	*	*	*	*			
8,0	14,0	6,5	0,5	*	*	*	*	*	*	*	*			
8,5	14,0	6,5	0,5	*	*	*	*	*	*	*	*			
9,0	14,0	6,5	0,5	*	*	*	*	*	*	*	*			
10,0	16,0	6,5	0,5	*	*	*	*	*	*	*	*			
12,0	18,0	6,5	0,8	*	*	*	*	*	*	*	*			
14,0	22,0	7,0	0,8	*	*	*	*	*	*	*	*	*	*	*
16,0	24,0	7,0	0,8	*	*	*	*	*	*	*	*	*	*	*
20,0	28,0	7,0	1,0					*	*	*	*	*	*	*
25,0	32,0	10,0	1,0					*	*	*	*	*	*	*
32,0	40,0	10,0	1,0					*	*	*	*	*	*	*

FORMA DE PEDIDO: d1 x L

ORDER FORM: d1 x L

EXPULSOR TEMPLADO FORMA "AH" (B) / DIN 1530 - ISO 6751
EJECTOR PIN HARDENED THROUGH TYPE "AH" (B) DIN 1530 - ISO 6751



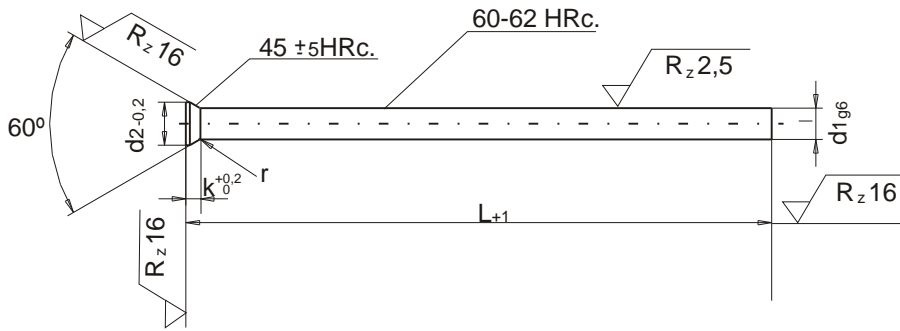
EJECUCION: Diametro d1: Templado y rectificado. Cabeza recalcada en caliente.
VERSION: d1: Hardened through. Shaft fine ground finished (g6). Head: Annealed.
MATERIAL: MATERIAL: Nº 1.2510 F(522). Nº 1.2510 (F 522).
DUREZAS: HARDNESS: Caña (d1): 60±2HRc. Shaft (d1): 60±2 HRc.
 Cabeza: 45±5HRc. Head: 45±5 HRc.
TEMPERATURA DE TRABAJO: TEMPER RESISTANCE: Hasta 220º C. At least 220º C.

d1 g6	d2 -0,2	K -0,05	r	L+2												
				40	63	80	100	125	160	200	250	315	400	500		
1,0	2,5	1,2	0,2				*	*	*	*						
1,2	2,5	1,2	0,2					*								
1,4	3,0	1,5	0,2					*								
1,5	3,0	1,5	0,2	*			*	*	*	*						
1,6	3,0	1,5	0,2				*	*	*	*						
1,7	3,0	1,5	0,2				*	*	*	*						
1,8	3,0	1,5	0,2				*	*	*	*						
1,9	3,0	1,5	0,2	*		*		*								
2,0	4,0	2,0	0,2	*	*	*	*	*	*	*	*	*	*	*	*	*
2,2	4,0	2,0	0,2				*	*	*	*	*	*	*	*	*	*
2,5	5,0	2,0	0,3	*	*	*	*	*	*	*	*	*	*	*	*	*
2,7	5,0	2,0	0,3				*	*	*	*	*	*	*	*	*	*
3,0	6,0	3,0	0,3	*	*	*	*	*	*	*	*	*	*	*	*	*
3,2	6,0	3,0	0,3				*	*	*	*	*	*	*	*	*	*
3,5	7,0	3,0	0,3				*	*	*	*	*	*	*	*	*	*
3,7	7,0	3,0	0,3				*	*	*	*	*	*	*	*	*	*
4,0	8,0	3,0	0,3	*	*	*	*	*	*	*	*	*	*	*	*	*
4,2	8,0	3,0	0,3				*	*	*	*	*	*	*	*	*	*
4,5	8,0	3,0	0,3				*	*	*	*	*	*	*	*	*	*
5,0	10,0	3,0	0,3	*	*	*	*	*	*	*	*	*	*	*	*	*
5,2	10,0	3,0	0,3				*	*	*	*	*	*	*	*	*	*
5,5	10,0	3,0	0,3				*	*	*	*	*	*	*	*	*	*
6,0	12,0	5,0	0,5	*	*	*	*	*	*	*	*	*	*	*	*	*
6,2	12,0	5,0	0,5				*	*	*	*	*	*	*	*	*	*
6,5	12,0	5,0	0,5				*	*	*	*	*	*	*	*	*	*
7,0	12,0	5,0	0,5				*	*	*	*	*	*	*	*	*	*
7,5	12,0	5,0	0,5				*	*	*	*	*	*	*	*	*	*
8,0	14,0	5,0	0,5	*	*	*	*	*	*	*	*	*	*	*	*	*
8,2	14,0	5,0	0,5				*	*	*	*	*	*	*	*	*	*
8,5	14,0	5,0	0,5				*	*	*	*	*	*	*	*	*	*
9,0	16,0	5,0	0,5				*	*	*	*	*	*	*	*	*	*
10,0	16,0	5,0	0,8			*	*	*	*	*	*	*	*	*	*	*
10,2	16,0	5,0	0,8				*	*	*	*	*	*	*	*	*	*
10,5	16,0	5,0	0,8				*	*	*	*	*	*	*	*	*	*
11,0	16,0	5,0	0,8				*	*	*	*	*	*	*	*	*	*
12,0	18,0	7,0	0,8			*	*	*	*	*	*	*	*	*	*	*
12,2	18,0	7,0	0,8				*	*	*	*	*	*	*	*	*	*
12,5	18,0	7,0	0,8				*	*	*	*	*	*	*	*	*	*
14,0	22,0	7,0	0,8				*	*	*	*	*	*	*	*	*	*
16,0	22,0	7,0	0,8				*	*	*	*	*	*	*	*	*	*
18,0	24,0	7,0	0,8				*	*	*	*	*	*	*	*	*	*
20,0	26,0	8,0	1,0				*	*	*	*	*	*	*	*	*	*

FORMA DE PEDIDO: d1 x L. Otros diametros y longitudes hasta 700 mm. Bajo demanda
ORDER FORM: d1 x L. Others diameters and lengths until 700 mm. Under request.

EXPULSOR TEMPLADO FORMA "D" DIN 1530

EJECTOR PIN HARDENED THROUGH TYPE "D" COUNTERSUNK HEAD



EJECUCION: Diametro d1: Templado y rectificado. Cabeza recalcada en caliente.

VERSION: Diameter d1: Hardened through and fine ground finished. Countersunk Head: Hot folded.

MATERIAL: MATERIAL: Nº 1.2510 F(522). Nº 1.2510 (F 522).

DUREZAS: HARDNESS: Caña (d1): 60±2HRC. Shaft (d1): 60±2 HRC.
Cabeza: 45±5HRC. Head: 45±5 HRC.

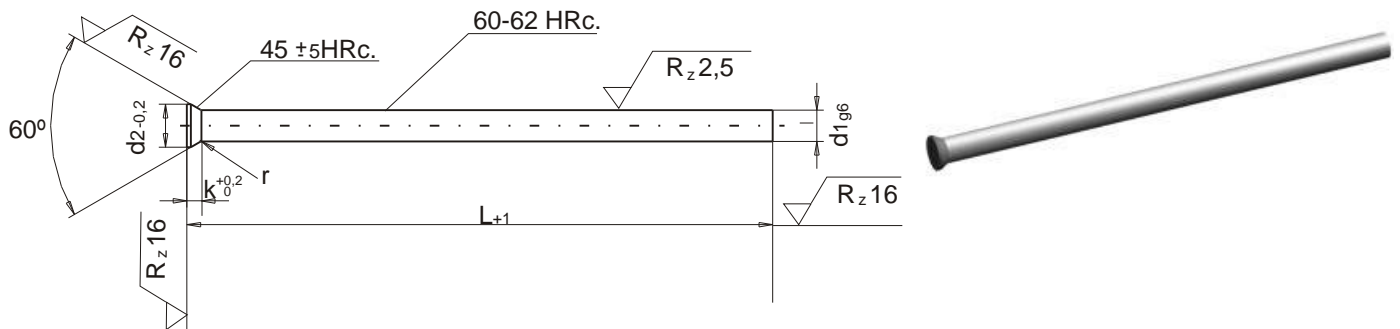
TEMPERATURA DE TRABAJO: TEMPER RESISTANCE: Hasta 220º C. At least 220º C.

d1 g6	d2 -0,2	K +0,2 0	r	L+1										
				40	63	80	100	125	160	175	200	250	315	
1,0	1,8	1,19	0,3			*	*	*	*		*			
1,1	1,8	1,11	0,3				*	*	*		*			
1,2	2,0	1,19	0,3				*		*		*			
1,25	2,0	1,15	0,3				*	*	*		*			
1,3	2,0	1,11	0,3				*	*	*		*			
1,4	2,2	1,19	0,3				*	*	*		*			
1,5	2,2	1,11	0,3			*	*	*	*		*			
1,6	2,5	1,28	0,3				*	*	*		*			
1,7	2,5	1,19	0,3				*	*	*		*			
1,75	2,8	1,15	0,3				*	*	*		*			
1,8	2,8	1,37	0,3				*	*	*		*			
1,9	2,8	1,28	0,3				*	*	*		*			
2,0	3,0	1,37	0,3		*	*	*	*	*	*	*	*	*	*
2,1	3,2	1,45	0,3				*	*	*		*			
2,2	3,2	1,37	0,3				*	*	*		*			
2,25	3,5	1,32	0,3				*	*	*		*			
2,3	3,5	1,54	0,3				*	*	*		*			
2,4	3,5	1,45	0,3				*	*	*		*			
2,5	3,5	1,37	0,3		*	*	*	*	*	*	*	*	*	*
2,6	4,0	1,71	0,3				*	*	*		*			
2,7	4,0	1,63	0,3				*	*	*		*			
2,75	4,0	1,58	0,3				*	*	*		*			
2,8	4,0	1,54	0,5				*	*	*		*			
2,9	4,0	1,45	0,5				*	*	*		*			
3,0	4,5	1,80	0,5		*	*	*	*	*	*	*	*	*	*
3,1	4,5	1,71	0,5				*	*	*		*			
3,2	4,5	1,63	0,5				*	*	*		*			
3,25	4,5	1,58	0,5				*	*	*		*			
3,3	4,5	1,54	0,5				*	*	*		*			
3,4	4,5	1,45	0,5				*	*	*		*			
3,5	5,0	1,80	0,5			*	*	*	*	*	*	*	*	*
3,6	5,0	1,54	0,8				*	*	*		*			
3,7	5,0	1,45	0,8				*	*	*		*			
3,75	5,0	1,58	0,8				*	*	*		*			
3,8	5,0	1,54	0,8				*	*	*		*			
3,9	5,0	1,45	0,8				*	*	*		*			
4,0	5,5	1,80	0,8		*	*	*	*	*	*	*	*	*	*

FORMA DE PEDIDO: d1 x L.

ORDER FORM: d1 x L.

EXPULSOR TEMPLADO FORMA "D" DIN 1530 (continuación) EJECTOR PIN HARDENED THROUGH TYPE "D" COUNTERSUNK HEAD (cntd)



EJECUCION: Diametro d1: Templado y rectificado. Cabeza recalcada en caliente.

VERSION: Diameter d1: Hardened through and fine ground finished. Countersunk Head: Hot folded.

MATERIAL: MATERIAL: Nº 1.2510 F(522). Nº 1.2510 (F 522).

DUREZAS: HARDNESS: Caña (d1): 60±2HRC. Shaft (d1): 60±2 HRC.
Cabeza: 45±5HRC. Head: 45±5 HRC.

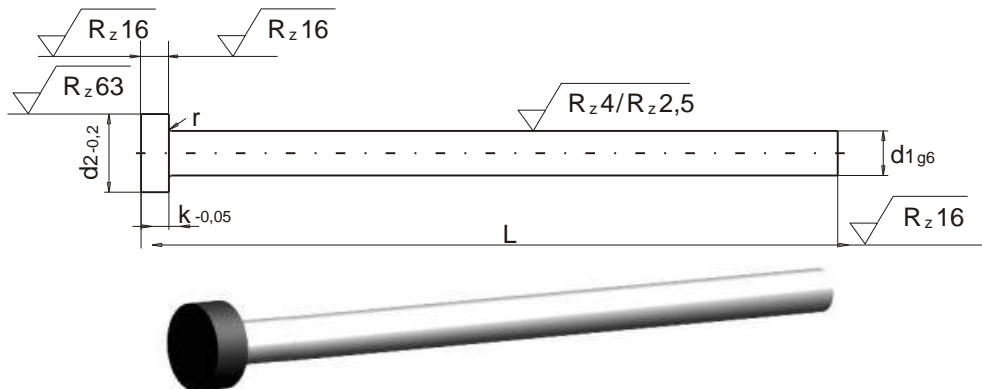
TEMPERATURA DE TRABAJO: TEMPER RESISTANCE: Hasta 220° C. At least 220° C.

d1 g6	d2 -0,2	K +0,02 0	r	L + 1									
				40	63	80	100	125	160	175	200	250	315
4,1	5,5	1,71	0,3				*	*	*		*		
4,2	5,5	1,63	0,3				*	*	*		*		
4,25	5,5	1,58	0,3				*	*	*		*		
4,4	5,5	1,45	0,3				*	*	*		*		
4,5	6,0	1,80	0,3			*	*	*	*	*	*	*	
4,6	6,0	1,63	0,3				*	*	*		*		
4,75	6,0	1,58	0,3				*	*	*		*		
5,0	6,5	1,80	0,3	*	*	*	*	*	*	*	*	*	*
5,1	6,5	1,71	0,3				*	*	*		*		
5,2	6,5	1,63	0,3				*	*	*		*		
5,25	6,5	1,39	0,3				*	*	*		*		
5,3	6,5	1,58	0,3				*	*	*		*		
5,4	6,5	1,45	0,3				*	*	*		*	*	*
5,5	7,0	1,80	0,5			*	*	*	*	*	*		
5,6	7,0	1,63	0,5				*	*	*		*		
5,75	7,0	1,38	0,5				*	*	*		*		
6,0	8,0	2,23	0,5		*	*	*	*	*	*	*	*	*
6,5	9,0	3,16	0,5				*	*	*	*	*	*	
7,0	9,0	2,73	0,5			*	*	*	*	*	*	*	*
7,5	10,0	3,16	0,5				*	*	*		*	*	
8,0	10,0	2,73	0,5		*	*	*	*	*	*	*	*	*
8,5	11,0	3,16	0,5				*	*	*		*	*	
9,0	11,0	2,73	0,5				*	*	*		*	*	*
10,0	12,0	2,73	0,5		*	*	*	*	*		*	*	*
12,0	14,0	2,73	0,5			*	*	*	*		*	*	*
14,0	16,0	3,23	0,8			*	*	*	*		*	*	*
16,0	18,0	3,23	0,8			*	*	*	*		*	*	*

FORMA DE PEDIDO: d1 x L.

ORDER FORM: d1 x L.

EXPULSOR BRILLANTE FORMA "AHSS" DIN 1530 - ISO 6751
EJECTOR PIN BRIGHT TYPE "AHSS" DIN 1530 - ISO 6751



EJECUCION: Cabeza estampada en caliente y rectificada. Caña (d1) templada y rectificada.
VERSION: Cylindrical head hot folded. Shaft fine ground finished (g6).

MATERIAL: MATERIAL: HSS/M2. Nº 1.3343 o similar. HSS/M2. Nº 1.3343 or similar.

DUREZA: Caña 62±2 HRc. Cabeza: 50±5 HRc.

HARDNESS: Shaft 62±2 HRc. Head: 50±5 HRc.

TEMPERATURA DE TRABAJO TEMPER RESISTANCE: Hasta 650° C At least 650° C.

RECOMENDADO PARA:

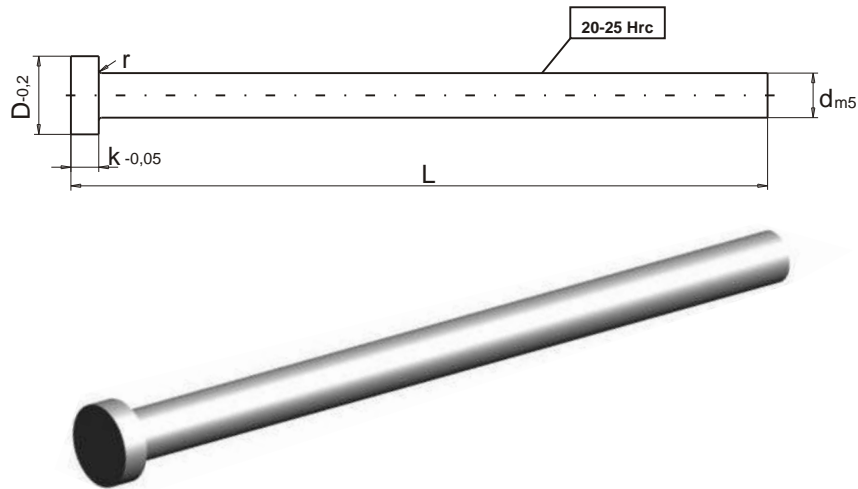
PARTICULARLY SUITABLE FOR :

- | | |
|---|---|
| * Pequeñas dimensiones | Small dimensions |
| * Plásticos abrasivos | Abrasive plastics |
| * Baños PVD | PVD coating/nitriding |
| * Puede ser nitrurado | Can be nitrided |
| * Prolongada duración particularmente en el procesamiento de duroplast y fibra de vidrio. | Notable tool life increased particularly for duroplast and fiberglass processing. |

d1 g6	d2 -0,2	K -0,05	r	L +2			
				100	160	200	250
1,5	3	1,5	0,2	*	*	*	
2,0	4	2,0	0,2	*	*	*	*
2,2	4	2,0	0,2		*	*	*
2,5	5	2,0	0,3	*	*	*	*
3,0	6	3,0	0,3	*	*	*	*
3,2	6	3,0	0,3		*	*	
3,5	7	3,0	0,3	*	*	*	*
4,0	8	3,0	0,3	*	*	*	*
4,2	8	3,0	0,3		*	*	
4,5	8	3,0	0,3	*	*	*	*
5,0	10	3,0	0,3	*	*	*	*
5,2	10	3,0	0,3			*	
5,5	10	3,0	0,3			*	
6,0	12	5,0	0,5			*	
8,0	14	5,0	0,5			*	
9,0	14	5,0	0,5			*	
10,0	16	5,0	0,5			*	

FORMA DE PEDIDO: d1 x L ORDER FORM: d1 x L
SUMINISTRABLE BAJO PEDIDO AVAILABLE UNDER REQUEST

EXPULSOR TIPO "A" COBRE DIN 1530
EJECTOR PIN TYPE "A" COOPER DIN 1530



Expulsores de alta conductibilidad térmica *High thermal conductivity pins.*

Tiempo del ciclo reducido *Reduced cycle time.*

Costo de mecanizado reducido *Lower machining costs.*

Larga duración *Longer service life.*

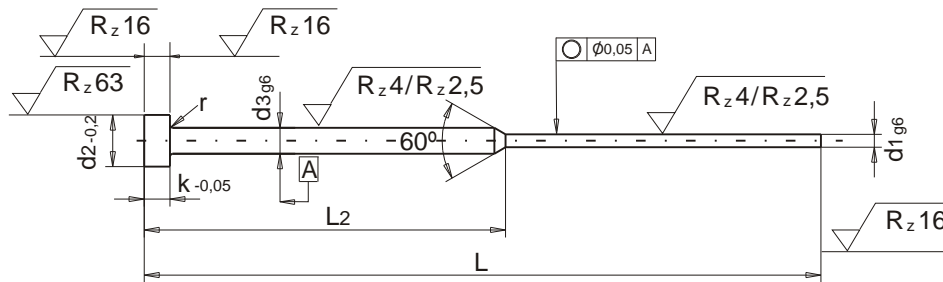
MATERIAL: Aleación cobre berilio **MATERIAL:** *Beryllium-free copper based alloy.*

Temperatura de trabajo: Hasta 350° C. *Temper resistance: At least 350° C.*

d m5	D -0,2	K -0,05	r	L				
				100	160	200	250	315
1,5	3	1,5	0,2	*	*			
2,0	4	2,0	0,2	*	*		*	
2,5	5	2,0	0,3	*	*		*	
3,0	6	3,0	0,3	*	*		*	
3,5	7	3,0	0,3	*	*		*	
4,0	8	3,0	0,3	*	*	*		*
4,5	8	3,0	0,3	*	*	*		*
5,0	10	3,0	0,3	*	*	*		*
6,0	12	5,0	0,5	*	*	*		*
7,0	12	5,0	0,5	*	*		*	
8,0	14	5,0	0,5	*	*	*		*
10,0	16	5,0	0,5	*	*	*		*
12,0	18	7,0	0,8	*	*	*		*
14,0	22	7,0	0,8	*	*	*		*
16,0	22	7,0	0,8	*	*	*		*

FORMA DE PEDIDO: d1 x L ORDER FORM: d1 x L
SUMINISTRABLE BAJO PEDIDO AVAILABLE UNDER REQUEST

EXPULSOR NITRURADO FORMA "C" DIN 1530 - ISO 8694
EJECTOR PIN STEPPED NITRIDED TYPE "C" DIN 1530 - ISO 8694



EJECUCION: Cabeza estampada en caliente y rectificada. Caña (d1) templada y rectificada.
VERSION: Cylindrical head hot folded. Shaft fine ground finished and nitrided (g6)
MATERIAL: MATERIAL: N° 1.2344. Designación DIN X40CrMoV51 . N° 1.2344. DIN X40CrMoV51.
TRATAMIENTO: TREATMENT: Nitruración por procedimiento TENIFER. Dip Nitrided.
 Nitruración al Gas. Gas Plasma Nitrided.

DUREZA: Caña (d1): Superficie 70 Hrc. Núcleo: 45-45 Hrc.

SHAFT HARDNESS: Surface 70 Hrc. Core 40-45 Hrc.

DUREZA CABEZA: HEAD HARDENESS: 45±5 Hrc.

RESISTENCIA DEL NUCLEO A LA TRACCION: CORE RIGIDITY: 150 Kp/mm2.

TEMPERATURA DE TRABAJO TEMPER RESISTANCE: Hasta 650° C At least 650° C.

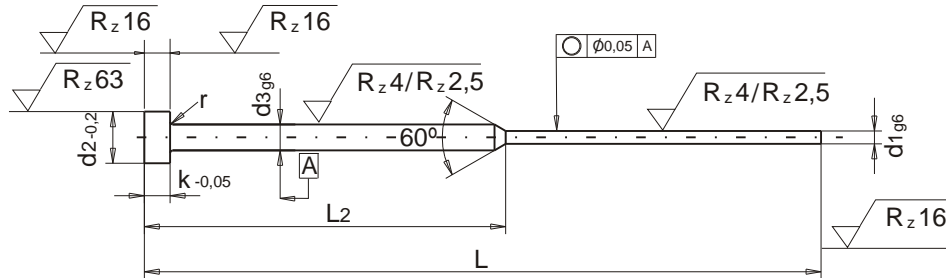
d1 g6	d3 g6	d2 -0,2	K -0,05	r	L +2					
					80	100	125	160	200	250
					L2(-1,0 -2,0)					
					32	50	50	75 / 63	75 / 80	100
0,8 a 0,9	2	4	2	0,2	*	*	*	*	*	*
1	2	4	2	0,2	*	*	*	*	*	*
1,1 y 1,4	2	4	2	0,2	*	*	*	*	*	*
1,5	3	6	3	0,3	*	*	*	*	*	*
1,6 a 1,9	3	6	3	0,3	*	*	*	*	*	*
2	3	6	3	0,3	*	*	*	*	*	*
2,1 a 2,4	3	6	3	0,3	*	*	*	*	*	*
2,5	3	6	3	0,3		*	*	*	*	*
2,6 a 2,9	3	6	3	0,3		*	*	*	*	*
3	4	8	3	0,3		*	*	*	*	
3,1 a 3,5	4	8	3	0,3		*	*	*	*	

FORMA DE PEDIDO: d1 x L

ORDER FORM: d1 x L

EXPULSOR TEMPLADO FORMA "CH" DIN 1530 - ISO 8694

EJECTOR PIN STEPPED THROUGH HARDENED TYPE "CH" DIN 1530 - ISO 8694



EJECUCION: Diámetro d1: templado y rectificado. Cabeza: Recalcada en caliente

VERSION: Diámetro d1: Hardened through. Shaft: fine ground finished (g6). Head: Annealed

MATERIAL: MATERIAL: Nº 1.2510 (F 522). Nº 1.2510 (F522)

DUREZA: Caña (d1): 60 ± 2 HRC. Cabeza: 45 ± 5 HRC.

HARDNESS: Shaft (d1): 60 ± 2 HRC. Head: 45 ± 5 HRC.

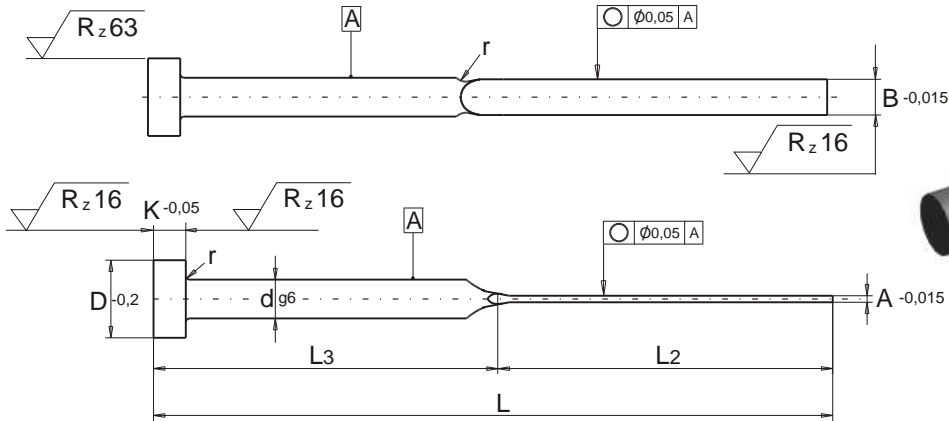
TEMPERATURA DE TRABAJO TEMPER RESISTANCE: Hasta 220° C At least 220° C..

d1 g6	d3 g6	d2 -0,2	K -0,05	r	L +2					
					80	100	125	160	200	250
					L2(-1,0 -2,0)					
					32	50	50	75 / 63	75 / 80	100
0,5 a 0,9	2	4	2	0,2	*	*	*	*	*	*
1	2	4	2	0,2	*	*	*	*	*	*
1,1 y 1,4	2	4	2	0,2	*	*	*	*	*	*
1,5	3	6	3	0,3	*	*	*	*	*	*
1,6 a 1,9	3	6	3	0,3	*	*	*	*	*	*
2	3	6	3	0,3	*	*	*	*	*	*
2,1 a 2,4	3	6	3	0,3	*	*	*	*	*	*
2,5	3	6	3	0,3		*	*	*	*	*
2,6 a 2,9	3	6	3	0,3		*	*	*	*	*

FORMA DE PEDIDO: d1 x L

ORDER FORM: d1 x L

EXPULSOR LAMINAR TEMPLADO FORMA "LA" DIN 1530 - ISO 8693
FLAT EJECTOR PIN HARDENED THROUGH TYPE "LA" DIN 1530 - ISO 8693

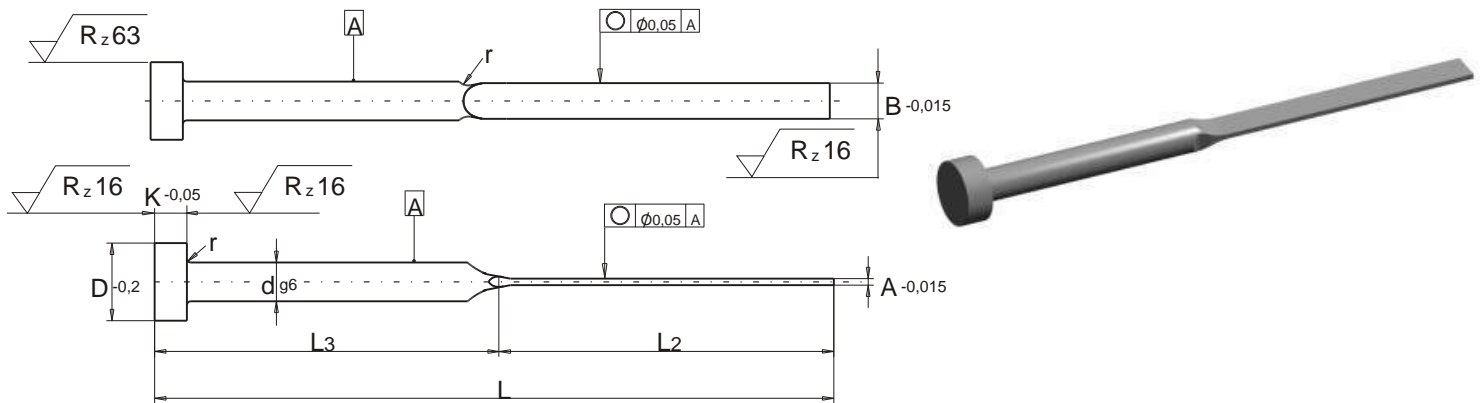


EJECUCION: Diametro d1: Templado y rectificado. Cabeza: Recalcada en caliente.
VERSION: Diameter d1: Hardened through and fine ground finished. Cylindrical Head: Hot folded.
MATERIAL: MATERIAL: Nº 1.2510 (F522). Nº 1.2510 (F522).
DUREZA: Caña (d1): 60±2 Hrc. Cabeza: 45±5 Hrc.
HARDNESS: Shaft (d1): 60±2 HRc. Head: 45±5 Hrc.
TEMPERATURA DE TRABAJO TEMPER RESISTANCE: Hasta 220º C At least 220º C.

L2						30	40	50	65	80	100	125	155
L3						30	40	50	60	80	100	125	160
L						60	80	100	125	160	200	250	315
A (-0,015)	B (-0,015)	d g6	D -0,2	K (-0,05)	r								
0,8	3,5	4,0	8,0	3,0	0,3	*	*	*	*				
1,0	3,5	4,0	8,0	3,0	0,3	*	*	*	*				
1,2	3,5	4,0	8,0	3,0	0,3	*	*	*	*				
0,8	3,8	4,2	8,0	3,0	0,3	*	*	*	*				
1,0	3,8	4,2	8,0	3,0	0,3	*	*	*	*	*			
1,2	3,8	4,2	8,0	3,0	0,3	*	*	*	*	*	*		
1,0	4,5	5,0	10,0	3,0	0,3		*	*	*	*	*		
1,2	4,5	5,0	10,0	3,0	0,3		*	*	*	*	*		
1,5	4,5	5,0	10,0	3,0	0,3		*	*	*	*	*		
1,6	4,5	5,0	10,0	3,0	0,3		*	*	*	*	*		
1,8	4,5	5,0	10,0	3,0	0,5		*	*	*	*	*		
1,0	5,5	6,0	12,0	5,0	0,5		*	*	*	*	*		
1,2	5,5	6,0	12,0	5,0	0,5		*	*	*	*	*		
1,5	5,5	6,0	12,0	5,0	0,5			*	*	*	*		
1,6	5,5	6,0	12,0	5,0	0,5			*	*	*	*		
1,8	5,5	6,0	12,0	5,0	0,5				*	*	*		
2,0	5,5	6,0	12,0	5,0	0,5				*	*	*		
1,2	7,5	8,0	14,0	5,0	0,5				*	*	*		
1,5	7,5	8,0	14,0	5,0	0,5				*	*	*		
1,6	7,5	8,0	14,0	5,0	0,5				*	*	*		
1,8	7,5	8,0	14,0	5,0	0,5					*	*		
2,0	7,5	8,0	14,0	5,0	0,5					*	*	*	
1,5	9,5	10,0	16,0	5,0	0,5						*	*	
1,8	9,5	10,0	16,0	5,0	0,5						*	*	
2,0	9,5	10,0	16,0	5,0	0,5						*	*	*
2,0	11,5	12,0	18,0	7,0	0,8						*	*	*

FORMA DE PEDIDO: A x B x L
ORDER FORM: A x B x L

EXPULSOR LAMINAR NITRURADO FORMA "LAN" DIN 1530 / ISO 8693
FLAT EJECTOR PIN NITRIDED TYPE "LAN" DIN 1530 / ISO 8693



EJECUCION VERSION : Cabeza estampada en caliente y rectificada. *Cylindrical head folded and fine ground finished*
 Caña y lámina templada y rectificada. *Shaft and flat hardened and fine ground finished.*

MATERIAL MATERIAL : Nº 1.2344 DIN X40CrMoV51.

DUREZA CABEZA HEAD HARDNESS: 45±5Hrc.

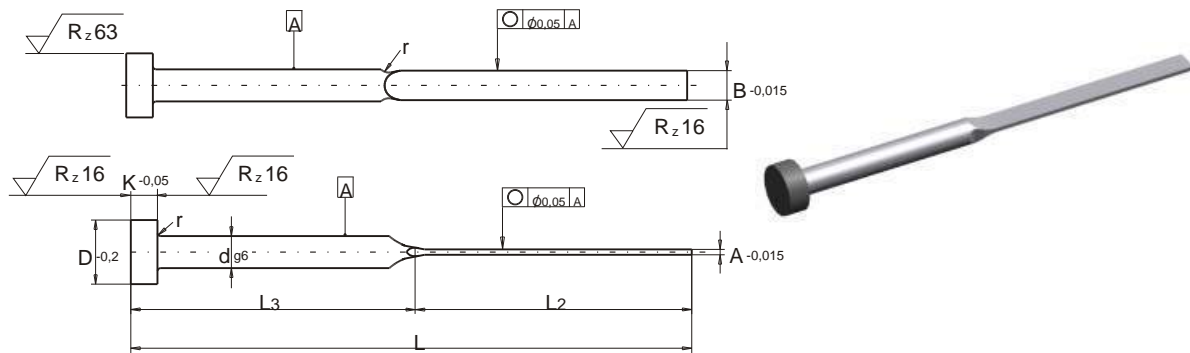
RESISTENCIA DEL NUCLEO A LA TRACCION CORE RIGIDITY: 150 Kp/mm².

TEMPERATURA DE TRABAJO TEMPER RESISTANCE : Hasta 650° C. *At least 650° C.*

DUREZA CAÑA SHAFT HARDNESS: Superficie *Surface* : 70 Hrc
 Núcleo *Core* : 40-45 Hrc.

TRATAMIENTO TREATMENT : Nitruración por el procedimiento TENIFER *Dip Nitrided*
 Nitruración al gas *Gas plasma nitrided.*

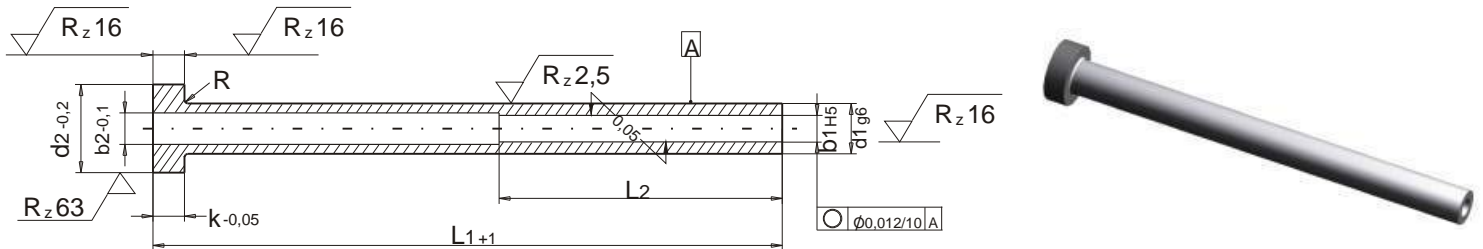
EXPULSOR LAMINAR NITRURADO FORMA "LAN" DIN 1530 ISO 8693 (continuación)
FLAT EJECTOR PIN NITRIDED TYPE "LAN" DIN 1530 ISO 8693 (cntd)



L2						30	40	50	65	80	100	125	155
L3						30	40	50	60	80	100	125	160
L						60	80	100	125	160	200	250	315
A (-0,015)	B (-0,015)	d g6	D -0,2	K (-0,05)	r								
0,8	3,5	4,0	8,0	3,0	0,3	*	*	*	*				
1,0	3,5	4,0	8,0	3,0	0,3	*	*	*	*				
1,2	3,5	4,0	8,0	3,0	0,3	*	*	*	*				
0,8	3,8	4,2	8,0	3,0	0,3	*	*	*	*				
1,0	3,8	4,2	8,0	3,0	0,3	*	*	*	*	*			
1,2	3,8	4,2	8,0	3,0	0,3	*	*	*	*	*	*		
1,0	4,5	5,0	10,0	3,0	0,3		*	*	*	*	*		
1,2	4,5	5,0	10,0	3,0	0,3		*	*	*	*	*		
1,5	4,5	5,0	10,0	3,0	0,3		*	*	*	*	*		
1,6	4,5	5,0	10,0	3,0	0,3		*	*	*	*	*		
1,8	4,5	5,0	10,0	3,0	0,5		*	*	*	*	*		
1,0	5,5	6,0	12,0	5,0	0,5		*	*	*	*	*		
1,2	5,5	6,0	12,0	5,0	0,5			*	*	*	*		
1,5	5,5	6,0	12,0	5,0	0,5			*	*	*	*		
1,6	5,5	6,0	12,0	5,0	0,5			*	*	*	*		
1,8	5,5	6,0	12,0	5,0	0,5				*	*	*		
2,0	5,5	6,0	12,0	5,0	0,5				*	*	*		
1,5	7,5	8,0	14,0	5,0	0,5				*	*	*		
1,6	7,5	8,0	14,0	5,0	0,5				*	*	*		
1,8	7,5	8,0	14,0	5,0	0,5				*		*		
2,0	7,5	8,0	14,0	5,0	0,5				*		*		*
1,8	9,5	10,0	16,0	5,0	0,8						*	*	
2,0	9,5	10,0	16,0	5,0	0,8						*	*	*
1,5	10,0	12,0	18,0	7,0	0,8				*		*	*	
1,8	10,0	12,0	18,0	7,0	0,8						*	*	
2,0	10,0	12,0	18,0	7,0	0,8						*	*	
2,0	11,5	12,0	18,0	7,0	0,8				*		*		*
1,8	12,0	14,0	22,0	7,0	0,8						*	*	
2,0	12,0	14,0	22,0	7,0	0,8						*	*	
2,0	15,0	16,0	22,0	7,0	0,8						*	*	*
2,5	15,0	16,0	22,0	7,0	0,8							*	*
3,0	19,0	20,0	26,0	8,0	1,0						*	*	*
4,0	19,0	20,0	26,0	8,0	1,0							*	*

FORMA DE PEDIDO: A x B x L
 ORDER FORM: A x B x L

EXPULSOR TUBULAR TEMPLADO FORMA "ET" DIN 16756 - ISO 8405 EJECTOR SLEEVE HARDENED TYPE "ET" DIN 16756 - ISO 8405



EJECUCION VERSION : Diámetros d_1, d_2, b_1 : templados y rectificados. *Diameters d_1, d_2, b_1 : hardened and fine ground finished.*
Cabeza: recalcada en caliente. *Head hot folded.*

MATERIAL MATERIAL : Nº 1.2510 (F 522).

DUREZAS HARDNESS: Caña (d_1): Shaft (d_1): 60 ± 2 Hrc.
Cabeza: Head : 45 ± 5 Hrc.

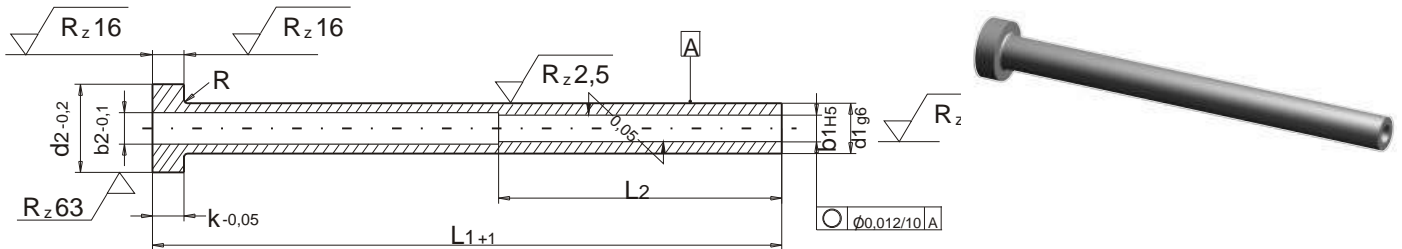
TEMPERATURA DE TRABAJO: Hasta 220° C.

TEMPER RESISTANCE : At least 220° C.

b1 (H5)	d1 (g6)	b2 -0,1	d2 -0,2	k -0,05	L2	R	L1 +1									
							75	100	125	150	175	200	225	250	275	300
1,6	3,0	2,0	6,0	3,0	35,0	0,3	*	*	*	*	*	*				
2,0	4,0	2,5	8,0	3,0	35,0	0,3	*	*	*	*	*	*	*			
2,2	4,0	2,5	8,0	3,0	35,0	0,3	*	*	*	*	*	*	*			
2,5	5,0	3,0	10,0	3,0	35,0	0,3	*	*	*	*	*	*	*			
2,7	5,0	3,0	10,0	3,0	45,0	0,3	*	*	*	*	*	*	*	*		
3,0	5,0	3,5	10,0	3,0	45,0	0,3	*	*	*	*	*	*	*	*		
3,2	5,0	3,5	10,0	3,0	45,0	0,3	*	*	*	*	*	*	*	*		
3,5	6,0	4,0	12,0	5,0	45,0	0,5	*	*	*	*	*	*	*	*		
3,7	6,0	4,0	12,0	5,0	45,0	0,5	*	*	*	*	*	*	*	*		
4,0	6,0	4,5	12,0	5,0	45,0	0,5	*	*	*	*	*	*	*	*	*	
4,2	8,0	5,0	14,0	5,0	45,0	0,5	*	*	*	*	*	*	*	*	*	
4,5	8,0	5,0	14,0	5,0	45,0	0,5	*	*	*	*	*	*	*	*	*	*
5,0	8,0	5,5	14,0	5,0	45,0	0,5	*	*	*	*	*	*	*	*	*	*
5,2	8-9	5,5	14,0	5,0	45,0	0,5	*	*	*	*	*	*	*	*	*	*
5,5	9,0	6,0	16,0	5,0	45,0	0,5	*	*	*	*	*	*	*	*	*	*
6,0	10,0	6,5	16,0	5,0	45,0	0,5	*	*	*	*	*	*	*	*	*	*
6,2	10,0	6,5	16,0	5,0	45,0	0,5	*	*	*	*	*	*	*	*	*	*
6,5	10,0	6,5	16,0	5,0	45,0	0,8	*	*	*	*	*	*	*	*	*	*
8,0	12,0	8,5	20,0	7,0	45,0	0,8	*	*	*	*	*	*	*	*	*	*
8,2	12,0	8,5	20,0	7,0	45,0	0,8	*	*	*	*	*	*	*	*	*	*
10,0	14,0	10,5	22,0	7,0	50,0	0,8	*	*	*	*	*	*	*	*	*	*
10,5	14,0	11,0	22,0	7,0	50,0	0,8	*	*	*	*	*	*	*	*	*	*
12,0	16,0	12,5	22,0	7,0	50,0	0,8	*	*	*	*	*	*	*	*	*	*
12,5	16,0	13,0	22,0	7,0	50,0	0,8	*	*	*	*	*	*	*	*	*	*

FORMA DE PEDIDO: $b_1 \times d_1 \times L_1$
ORDER FORM: $b_1 \times d_1 \times L_1$

EXPULSOR TUBULAR NITRURADO FORMA "ETN" DIN 16756 - ISO 8405
EJECTOR SLEEVE BLACK NITRIDED TYPE "ETN" DIN 16756 - ISO 8405

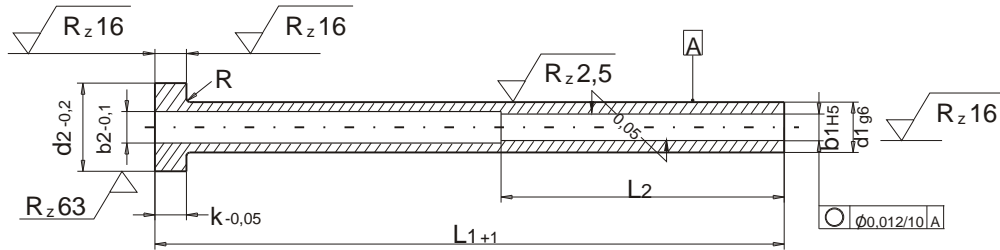


- EJECUCION VERSION :** Cabeza estampada en caliente. Caña (d1) templada y rectificada.
Cylindrical head hot folded. Shaft hardened and fine ground finished.
- MATERIAL MATERIAL :** Nº 1.2344. DIN X40CrMoV51. Nº 1.2344. DIN X40CrMoV51.
- TRATAMIENTO TREATMENT :** Nitruración por el procedimiento TENIFER. Dip Nitrided.
- DUREZAS HARDNESS:** Superficie / Surface : 70 Hrc.(950 Kg/mm2 - 0,3 Kp).
Núcleo / Core: 40-45 Hrc. (400-450Kg/mm2).
Cabeza: Head: 50 HRC.
- RESISTENCIA DEL NUCLEO A LA TRACCION : CORE RIGIDITY: 150 Kp/mm2. 150 Kp/mm2.**
- TEMPERATURA DE TRABAJO: Hasta 650º C.**
- TEMPER RESISTANCE :** At least 650º C.

b1 (H5)	d1 (g6)	b2 -0,1	d2 -0,2	k -0,05	L2	R	L1 +1									
							75	100	125	150	175	200	225	250	275	300
2,0	4,0	2,5	8,0	3,0	35,0	0,3	*	*	*	*	*	*	*			
2,2	4,0	2,5	8,0	3,0	35,0	0,3	*	*	*	*	*	*	*			
2,5	5,0	3,0	10,0	3,0	35,0	0,3	*	*	*	*	*	*	*			
2,7	5,0	3,0	10,0	3,0	45,0	0,3	*	*	*	*	*	*	*			
3,0	5,0	3,5	10,0	3,0	45,0	0,3	*	*	*	*	*	*	*			
3,2	5,0	3,5	10,0	3,0	45,0	0,3	*	*	*	*	*	*	*	*		
3,5	6,0	4,0	12,0	5,0	45,0	0,5	*	*	*	*	*	*	*	*		
3,7	6,0	4,0	12,0	5,0	45,0	0,5	*	*	*	*	*	*	*	*		
4,0	6,0	4,5	12,0	5,0	45,0	0,5	*	*	*	*	*	*	*	*		
4,2	8,0	5,0	14,0	5,0	45,0	0,5	*	*	*	*	*	*	*	*	*	
4,5	8,0	5,0	14,0	5,0	45,0	0,5	*	*	*	*	*	*	*	*	*	
5,0	8,0	5,5	14,0	5,0	45,0	0,5	*	*	*	*	*	*	*	*	*	
5,2	8-9	5,5	14,0	5,0	45,0	0,5	*	*	*	*	*	*	*	*	*	*
5,5	9,0	6,0	16,0	5,0	45,0	0,5	*	*	*	*	*	*	*	*	*	*
6,0	10,0	6,5	16,0	5,0	45,0	0,5	*	*	*	*	*	*	*	*	*	*
6,2	10,0	6,5	16,0	5,0	45,0	0,5	*	*	*	*	*	*	*	*	*	*
6,5	10,0	7,0	16,0	5,0	45,0	0,5	*	*	*	*	*	*	*	*	*	*
8,0	12,0	8,5	20,0	7,0	45,0	0,8	*	*	*	*	*	*	*	*	*	*
8,2	12,0	8,5	20,0	7,0	45,0	0,8	*	*	*	*	*	*	*	*	*	*
10,0	14,0	10,5	22,0	7,0	50,0	0,8	*	*	*	*	*	*	*	*	*	*
10,5	14,0	11,0	22,0	7,0	50,0	0,8	*	*	*	*	*	*	*	*	*	*
12,0	16,0	12,5	22,0	7,0	50,0	0,8	*	*	*	*	*	*	*	*	*	*
12,5	16,0	13,0	22,0	7,0	50,0	0,8	*	*	*	*	*	*	*	*	*	*

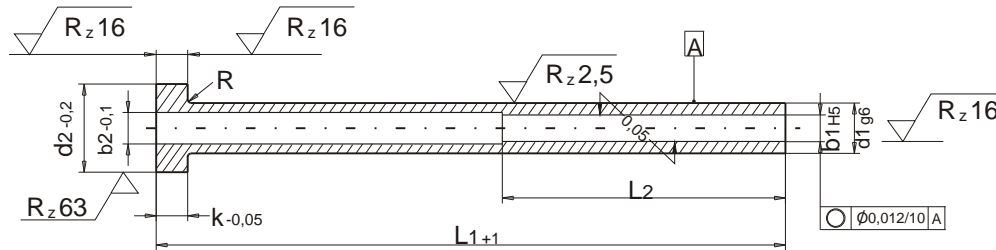
FORMA DE PEDIDO: b1 x d1 x L1
ORDER FORM: b1 x d1 x L1

EXPULSOR TUBULAR NITRURADO BRILLANTE FORMA "ETP" DIN 16756 / ISO 8405
EJECTOR SLEEVE BRIGHT NITRIDED TYPE "ETP" DIN 16756 / ISO 8405



- EJECUCION VERSION :** Cabeza estampada en caliente. *Head hot folded.*
 Caña templada y rectificada. *Shaft fine ground finished and gas nitrided.*
- MATERIAL MATERIAL :** Nº 1.2344 DIN X40CrMoV51.
- TRATAMIENTO TREATMENT :** Nitruración al gas *Gas nitrided.*
- DUREZA CABEZA HEAD HARDNESS:** 50 HRc.
- DUREZA CAÑA SHAFT HARDNESS:** Superficie *Surface* : 70 HRc (950 Kg/mm² - 0,3 Kp).
 Núcleo *Core* : 40-45 HRc. (400-450 Kg/mm²).
- RESISTENCIA DEL NUCLEO A LA TRACCION CORE RIGIDITY:** 150 Kp/mm².
- TEMPERATURA DE TRABAJO TEMPER RESISTANCE :** Hasta 650º C. *At least 650º C.*

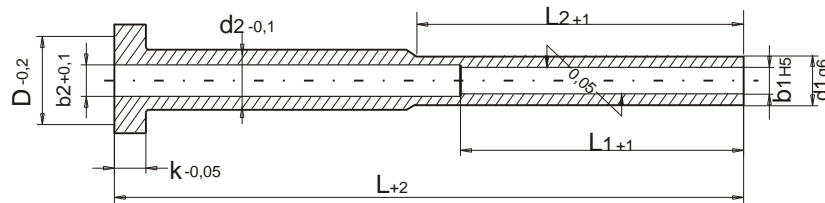
EXPULSOR TUBULAR NITRURADO BRILLANTE FORMA "ETP" (continuación)
EJECTOR PIN SLEEVE BRIGHT NITRIDED TYPE "ETP" (cntd) DIN 16756 ISO 8405



b1 (H5)	d1 (g6)	b2 -0,1	d2 -0,2	k -0,05	L2	R	L1 +1									
							75	100	125	150	175	200	225	250	275	300
1,6	3,0	2,0	6,0	3,0	35,0	0,3	*	*	*	*	*	*	*			
2,0	4,0	2,5	8,0	3,0	35,0	0,3	*	*	*	*	*	*	*			
2,2	4,0	2,5	8,0	3,0	35,0	0,3	*	*	*	*	*	*	*			
2,5	5,0	3,0	10,0	3,0	35,0	0,3	*	*	*	*	*	*	*			
2,7	5,0	3,0	10,0	3,0	45,0	0,3	*	*	*	*	*	*	*			
3,0	5,0	3,5	10,0	3,0	45,0	0,3	*	*	*	*	*	*	*	*	*	*
3,2	5,0	3,5	10,0	3,0	45,0	0,3	*	*	*	*	*	*	*	*	*	*
3,5	6,0	4,0	12,0	5,0	45,0	0,5	*	*	*	*	*	*	*	*	*	*
3,7	6,0	4,0	12,0	5,0	45,0	0,5	*	*	*	*	*	*	*	*	*	*
4,0	6,0	4,5	12,0	5,0	45,0	0,5	*	*	*	*	*	*	*	*	*	*
4,2	8,0	5,0	14,0	5,0	45,0	0,5	*	*	*	*	*	*	*	*	*	*
4,5	8,0	5,0	14,0	5,0	45,0	0,5	*	*	*	*	*	*	*	*	*	*
5,0	8,0	5,5	14,0	5,0	45,0	0,5	*	*	*	*	*	*	*	*	*	*
5,2	8-9	5,5	14,0	5,0	45,0	0,5	*	*	*	*	*	*	*	*	*	*
5,5	9,0	6,0	16,0	5,0	45,0	0,5	*	*	*	*	*	*	*	*	*	*
6,0	10,0	6,5	16,0	5,0	45,0	0,5	*	*	*	*	*	*	*	*	*	*
6,2	10,0	6,5	16,0	5,0	45,0	0,5	*	*	*	*	*	*	*	*	*	*
6,5	10,0	6,5	16,0	5,0	45,0	0,8	*	*	*	*	*	*	*	*	*	*
8,0	12,0	8,5	20,0	7,0	45,0	0,8	*	*	*	*	*	*	*	*	*	*
8,2	12,0	8,5	20,0	7,0	45,0	0,8	*	*	*	*	*	*	*	*	*	*
10,0	14,0	10,5	22,0	7,0	50,0	0,8	*	*	*	*	*	*	*	*	*	*
10,5	14,0	11,0	22,0	7,0	50,0	0,8	*	*	*	*	*	*	*	*	*	*
12,0	16,0	12,5	22,0	7,0	50,0	0,8	*	*	*	*	*	*	*	*	*	*
12,5	16,0	13,0	22,0	7,0	50,0	0,8	*	*	*	*	*	*	*	*	*	*

FORMA DE PEDIDO: b1 x d1 x L1 ORDER FORM: b1 x d1 x L1
SUMINISTRABLE BAJO PEDIDO AVAILABLE UNDER REQUEST

EXPULSOR TUBULAR REFORZADO FORMA "ETC"
STEPPED EJECTOR SLEEVE TYPE "ETC"



EJECUCION: Templado: Material 1.2510

Nitrurado: Material 1.2344

VERSION: Hardened: Material 1.2510

Nitrided: Material 1.2344

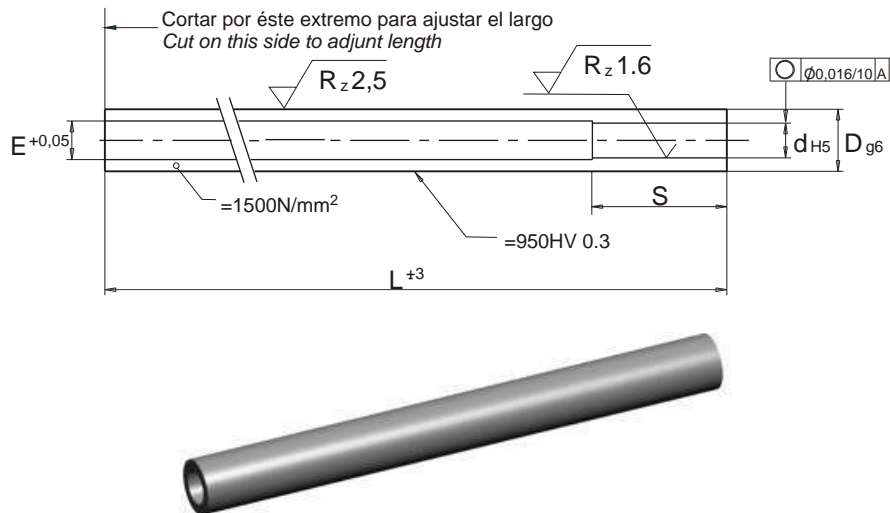
CARACTERISTICAS : Identicas a las referencias 108 y 109.

CHARACTERISTICS : Same as references 108 & 109.

d1 (g6)	d2 (-0,1)	b1 (H5)	b2 (+0,1)	D (-0,2)	K (-0,05)	l1 (+1)	l2 (+1)	L (+2)

MEDIDAS A INDICAR POR EL CLIENTE.
SIZES ON CUSTOMER REQUEST.

EXPULSOR TUBULAR SIN CABEZA NITRURADO FORMA "ETS" HEADLESS EJECTOR SLEEVE BLACK NITRIDED TYPE "ETS"

**EJECUCION:**

VERSION :

MATERIAL:

MATERIAL:

TRATAMIENTO:

TREATMENT :

DUREZA CAÑA:

SHAFT HARDNESS:

TEMPERATURA DE TRABAJO:

TEMPER RESISTANCE :

Templado y rectificado.

Hardened and fine ground finished.

Nº 1.2344. DIN X40CrMoV51.

Nº 1.2344. DIN X40CrMoV51.

Nitruración por el procedimiento TENIFER.

Dip Nitrided.

Superficie : 70 HRc. Núcleo : 40-45 HRc.

Surface : 70 HRc. Core: 40 - 45 HRc.

Hasta 650º C.

At least 650º C.

d (H5)	D (g6)	E (+0,05)	S	L1 ±3				
				400	500	600	700	800
3,0	6,0	3,2	30	*	*	*	*	*
5,0	8,0	5,2	35	*	*	*	*	*
5,0	10,0	6,2	40	*	*	*	*	*
8,0	12,0	8,2	45	*	*	*	*	*
10,0	14,0	10,2	50	*	*	*	*	*

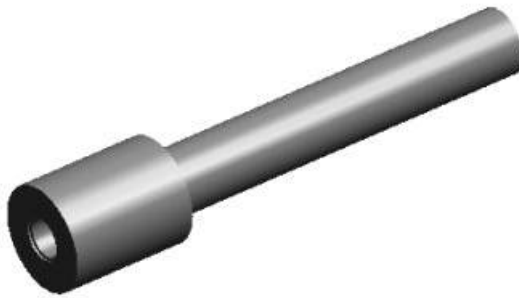
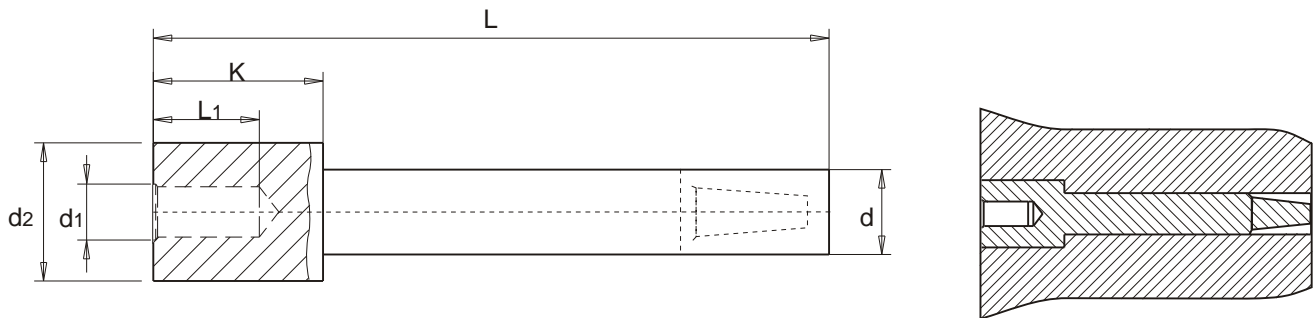
FORMA DE PEDIDO: d x D x L.

ORDER FORM: d x D x L.

SUMINISTRABLE BAJO PEDIDO

AVAILABLE UNDER REQUEST

NOYO TIPO "Z"
CORE PIN TYPE "Z"

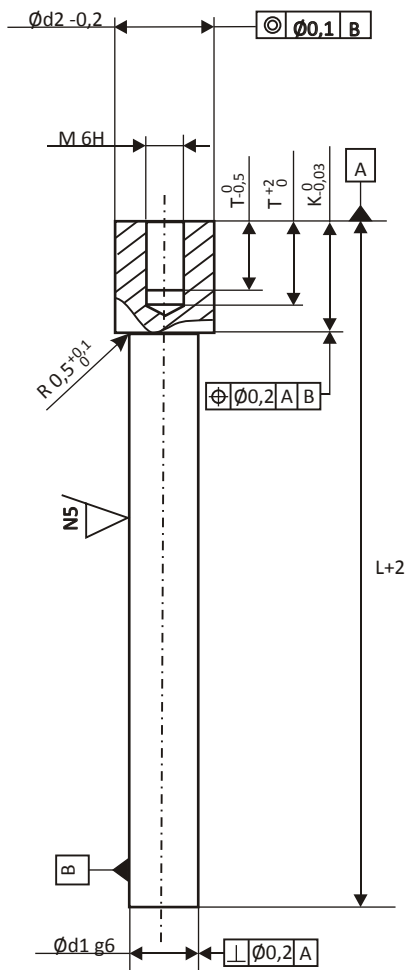
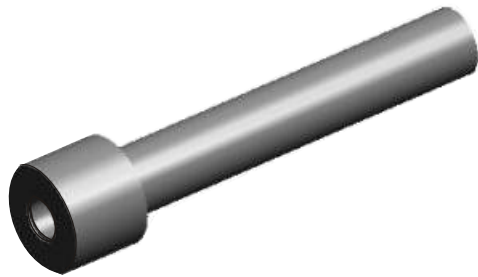


MATERIAL: Nº 1.2344.
MATERIAL: Nº 1.2344.
DUREZA: 46 - 48 HRC.
HARDENESS: 46 - 48 HRC.

d k6	d1	d2 -0,2	l1	K -0,05	L						
					63	80	100	125	160	200	
3	M-4	6	5	10	*			*			
3,5					*			*			
4	M-5	8	7	12	*			*			
4,5					*			*			
5	M-6	9	9	14		*			*		
5,5						*			*		
6						*			*		
6,5						*			*		
8	M-8	13	10	16		*			*		
8,5						*			*		
10	M-10	15	12	18			*			*	
10,5							*			*	
12	M-12	18	14	22			*			*	
12,5							*			*	
14							*			*	
14,5							*			*	
16,0	M-16	22	18	25			*			*	
16,5							*			*	

FORMA DE PEDIDO: d x L.
ORDER FORM: d x L.
OTRAS MEDIDAS BAJO DEMANDA
OTHER SIZES ON REQUEST.

NOYOS "Z-49"
"Z-49" CORE PINS



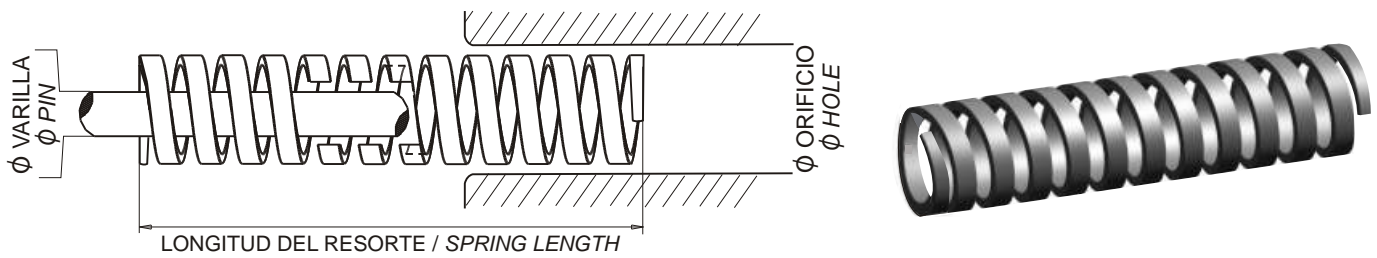
MATERIAL: Nº 1.2344.
MATERIAL: Nº 1.2344.
TRATAMIENTO TERMICO: Templado y Revenido
HEAT TREATMENT: Hardened and annealed
DUREZA: 42 - 46 HRC.
HARDENESS: 42 - 46 HRC.

FORMA DE PEDIDO: d x L.
ORDER FORM: d x L.
OTRAS MEDIDAS BAJO DEMANDA
OTHER SIZES ON REQUEST.

d1	d2	M	T	K
3	8	M-4	7	12
3,5				
4				
4,5				
5	10	M-5	9	14
5,5				
6				
6,5				
7	13,8	M-6	10	16
7,5				
8				
8,5				
9	17	M-8	14	22
9,5				
10				
10,5				
11	20,8	M-8	14	22
11,5				
12				
12,5				
13	27	M-8	14	22
13,5				
14				
14,5				
15	33	M-8	14	22
15,5				
16				
16,5				
17	33	M-8	14	22
18				
19				
20				
26	33	M-8	14	22
27				
28				
29				

Largos: 100, 150, 200, 250, 300, 350, 400, 450, 500, 550 y 600.
Lengths: 100, 150, 200, 250, 300, 350, 400, 450, 500, 550 y 600.

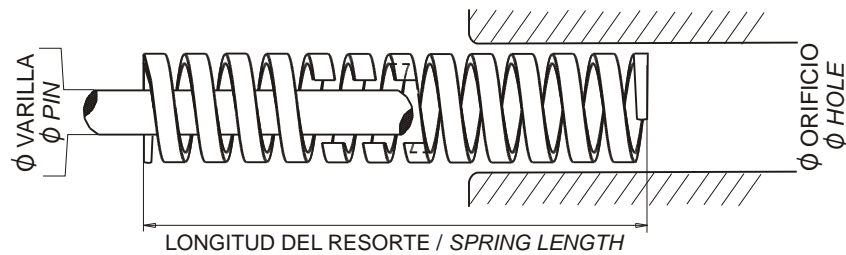
RESORTES MATRICERIA Color Verde. Carga ligera (I) DIE SPRINGS Green colour. Light load (I)



Diám. orificio Ø Hole	Diám. varilla Ø Pin	Secc. hilo Thread section	Long. Length mm	Cod. Code	Const.	Deflexión recom. 30% Recommended deflection 30%		Deflexión máx. 40% Maximal deflection 40%		Deflexión al bloqueo aprox. Deflection as block	
					Constant. N/1 mm	N	mm	N	mm	N	mm
10	5	1,7 x 1,1	25	V10x25	11,7	88	7,5	117	10,0	140	12
			32	V10x32	9,4	90	9,6	120	12,8	150	16
			38	V10x38	7,4	84	11,4	112	15,2	141	19
			44	V10x44	6,6	89	13,5	119	18,0	145	22
			51	V10x51	5,9	88	15,0	118	20,0	141	24
			63	V10x63	4,5	88	19,5	117	26,0	144	32
			76	V10x76	3,5	79	22,5	105	30,0	130	37
			305	V10x305	1,0	91	91,0	121	121,0	144	144
13	6,3	2,3 x 1,5	25	V13x25	15,7	117	7,5	157	10,0	188	12
			32	V13x32	12,2	117	9,6	156	12,8	207	17
			38	V13x38	10,6	120	11,4	161	15,2	212	20
			44	V13x44	8,8	118	13,5	158	18,0	211	24
			51	V13x51	7,8	117	15,0	157	20,0	210	27
			64	V13x64	5,9	115	19,5	153	26,0	201	34
			76	V13x76	5,0	113	22,5	150	30,0	190	38
			305	V13x305	1,3	118	91,0	158	121,0	192	148
16	8	3,2 x 1,7	25	V16x25	28,4	213	7,5	284	10,0	340	12
			32	V16x32	22,5	216	9,6	288	12,8	360	16
			38	V16x38	19,1	217	11,4	290	15,2	362	19
			44	V16x44	15,7	212	13,5	282	18,0	361	23
			51	V16x51	13,8	207	15,0	276	20,0	345	25
			64	V16x64	10,8	210	19,5	280	26,0	367	34
			76	V16x76	8,9	200	22,5	267	30,0	338	38
			89	V16x89	7,8	210	27,0	280	36,0	351	45
			102	V16x102	6,8	206	30,0	274	40,0	340	50
			305	V16x305	2,2	200	91,0	266	121,0	330	150
20	10	4 x 2,1	25	V19x25	51,0	383	7,5	510	10,0	612	12
			32	V19x32	38,3	368	9,6	490	12,8	612	16
			38	V19x38	31,1	355	11,4	473	15,2	590	19
			44	V19x44	26,7	360	13,5	481	18,0	587	22
			51	V19x51	23,7	356	15,0	474	20,0	592	25
			64	V19x64	18,4	359	19,5	478	26,0	588	32
			76	V19x76	15,6	351	22,5	468	30,0	592	38
			89	V19x89	13,3	359	27,0	479	36,0	598	45
			102	V19x102	11,8	354	30,0	472	40,0	613	52
			115	V19x115	10,4	364	35,0	478	46,0	613	59
			127	V19x127	9,4	357	38,0	470	50,0	620	66
			152	V19x152	7,8	351	45,0	468	60,0	616	79
			305	V19x305	3,8	346	91,0	460	121,0	592	156

FORMA DE PEDIDO: Código
ORDER FORM: Code

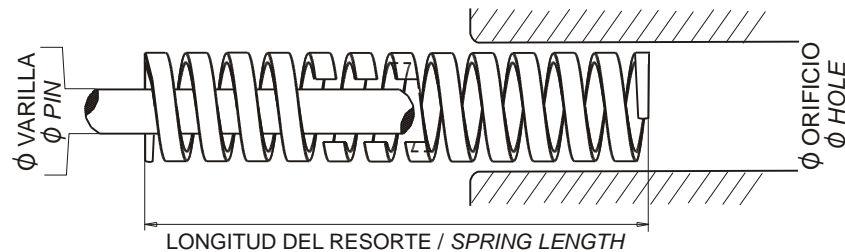
RESORTES MATRICERIA Color Verde. Carga ligera (II) DIE SPRINGS Green colour. Light load (II)



Diám. orificio Ø Hole mm	Diám. varilla Ø Pin mm	Secc. hilo Thread section	Long. Length mm	Cod. Code	Const.	Deflexión recom. 30%		Deflexión máx. 40%		Deflexión al bloqueo aprox.	
					Constant. N/1 mm	Recomended deflection 30% N	mm	Maximal deflection 40% N	mm	Deflection as block N	mm
25	12,5	5,3 x 2,7	25	V26x25	94	705	7,5	940	10	1128	12
			32	V26x32	73,6	707	9,6	942	12,8	1177	16
			38	V26x38	61,8	705	11,4	940	15,2	1112	18
			44	V26x44	49	662	13,5	882	18	1078	22
			51	V26x51	44	660	15	880	20	1100	25
			64	V26x64	34,3	668	19,5	891	26	1097	32
			76	V26x76	29	653	22,5	870	30	1102	38
			89	V26x89	24,5	662	27	882	36	1102	45
			102	V26x102	21,5	645	30	860	40	1118	52
			115	V26x115	18,4	644	35	846	46	1085	59
			127	V26x127	17,1	650	38	855	50	1128	66
			152	V26x152	14,4	648	45	864	60	1137	79
			178	V26x178	12,2	647	53	854	70	1110	91
			201	V26x201	10,7	652	61	867	81	1112	104
305	V26x305	7,2	655	91	871	121	1123	156			
32	16	6,7 x 3,3	38	V32x38	91,2	1039	11,4	1386	15,2	1641	18
			45	V32x45	77,5	1046	13,5	1395	18	1705	22
			51	V32x51	66,7	1000	15	1334	20	1667	25
			64	V32x64	52,9	1031	19,5	1375	26	1692	32
			76	V32x76	44,1	992	22,5	1323	30	1675	38
			89	V32x89	37,3	1007	27	1342	36	1678	45
			102	V32x102	31,4	942	30	1256	40	1632	52
			115	V32x115	28	980	35	1288	46	1652	59
			127	V32x127	25,5	980	38	1288	46	1652	66
			152	V32x152	21	945	45	1260	60	1659	79
			178	V32x178	17,5	927	53	1225	70	1592	91
			203	V32x203	15,4	939	61	1247	81	1601	104
			254	V32x254	12,2	927	76	1220	100	1586	130
			305	V32x305	10,2	928	91	1234	121	1591	156
40	20	8 x 4	51	V38x51	98,1	1471	15	1962	20	2452	25
			64	V38x64	76,8	1497	19,5	1996	26	2457	32
			76	V38x76	64,4	1453	22,5	1938	30	2454	38
			89	V38x89	55	1485	27	1980	36	2475	45
			102	V38x102	48	1440	30	1920	40	2496	52
			115	V38x115	42,1	1473	35	1936	46	2483	59
			127	V38x127	38,2	1451	38	1910	50	2521	66
			152	V38x152	30,4	1380	45	1824	60	2401	79
			178	V38x178	25,5	1351	53	1785	70	2320	91
			203	V38x203	22,8	1390	61	1846	81	2371	104
			254	V38x254	18,2	1383	76	1820	100	2366	130
			305	V38x305	14,9	1356	91	1802	121	2324	156

FORMA DE PEDIDO: Código
ORDER FORM: Code

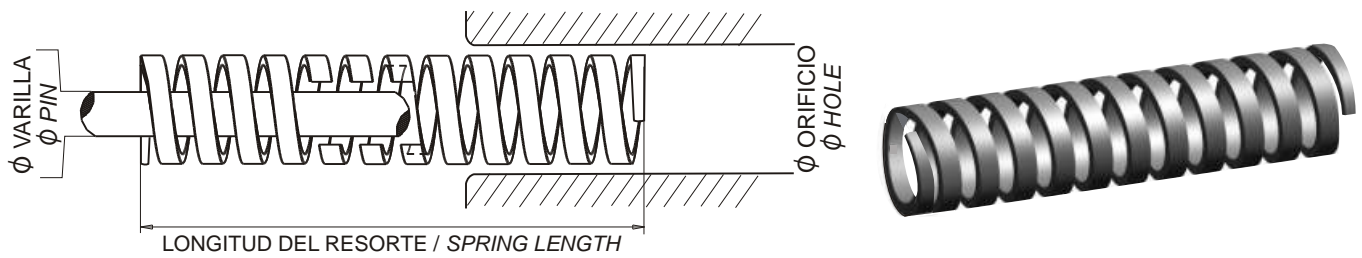
RESORTES MATRICERIA Color Verde. Carga ligera (III)
DIE SPRINGS Green colour. Light load (III)



Diám. orificio Ø Hole mm	Diám. varilla Ø Pin mm	Secc. hilo Thread section	Long. Length mm	Cod. Code	Const. Constant. N/1 mm	Deflexión recom. 30% Recommended deflection 30%		Deflexión máx. 40% Maximal deflection 40%		Deflexión al bloqueo aprox. Deflection as block	
						N	mm	N	mm	N	mm
50	25	11,1 x 5,5	64	V51x64	141	2749	19,5	3666	26	4512	32
			76	V51x76	120	2700	22,5	3600	30	4560	38
			89	V51x89	100	2700	27	3600	36	4500	45
			102	V51x102	88,3	2649	30	3532	40	4591	52
			115	V51x115	77	2695	35	3542	46	4543	59
			127	V51x127	68,6	2606	38	3430	50	4527	66
			152	V51x152	56,8	2556	45	3408	60	4487	79
			178	V51x178	48	2544	53	3360	70	4368	91
			203	V51x203	41,2	2513	61	3373	81	4284	104
			254	V51x254	33,3	2530	76	3330	100	4329	130
			305	V51x305	27,2	2474	91	3291	121	4243	156
63	38	11,6 x 7,7	76	V63x76	189,3	4259	22,5	5679	30	7382	39
			89	V63x89	158	4266	27	5688	36	7110	45
			102	V63x102	135,4	4062	30	5416	40	7040	52
			115	V63x115	115,7	4049	35	5322	46	6826	59
			127	V63x127	103	3914	38	5159	50	6798	66
			152	V63x152	84,3	3793	45	5058	60	6659	79
			178	V63x178	71,6	3794	53	5012	70	6515	91
			203	V63x203	61,8	3769	61	5005	81	6427	104
			254	V63x254	47	3572	76	4700	100	6110	130
						305	V63x305	38,2	3476	91	4622

FORMA DE PEDIDO: Código
ORDER FORM: Code

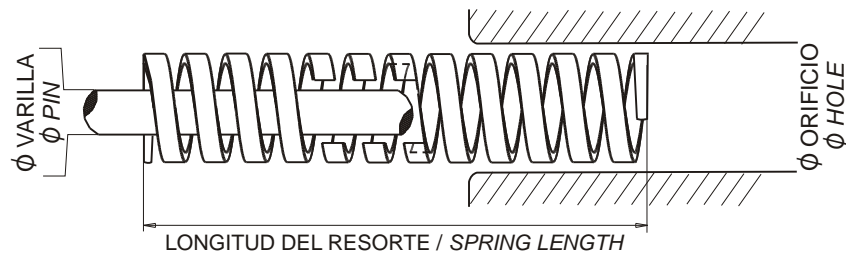
RESORTES MATRICERIA Color Azul. Carga media (I) DIE SPRINGS Blue colour. Medium load (I)



Diám. orificio Ø Hole mm	Diám. varilla Ø Pin mm	Secc. hilo Thread section	Long. Length mm	Cod. Code	Const.	Deflexión recom. 30% Recommended deflection 30%		Deflexión máx. 40% Maximal deflection 40%		Deflexión al bloqueo aprox. Deflection as block	
					N/1 mm	N	mm	N	mm	N	mm
10	5	1,8 x 1,2	25	Az10x25	17,1	106	6,2	148	8,7	171	10
			32	Az10x32	14,7	117	8	161	11	176	12
			38	Az10x38	12,7	120	9,5	171	13,5	190	15
			44	Az10x44	10,8	118	11	167	15,5	205	19
			51	Az10x51	9,8	122	12,5	171	17,5	205	21
			64	Az10x64	7,4	118	16	170	23	192	26
			76	Az10x76	5,9	112	19	153	26	182	31
13	6,3	2,5 x 1,7	305	Az10x305	1,5	114	76	159	106	180	120
			25	Az13x25	25,5	158	6,2	221	8,7	255	10
			32	Az13x32	19,6	156	8	215	11	254	13
			38	Az13x38	16,7	158	9,5	225	13,5	267	16
			44	Az13x44	13,7	150	11	212	15,5	274	20
			51	Az13x51	12,7	158	12,5	222	17,5	279	22
			64	Az13x64	9,8	156	16	225	23	264	27
16	8	3,2 x 2,0	76	Az13x76	8,3	157	19	215	26	257	31
			305	Az13x305	2	152	76	212	106	240	120
			25	Az16x25	47	291	6,2	408	8,7	423	9
			32	Az16x32	37,2	297	8	409	11	446	12
			38	Az16x38	30,4	288	9,5	410	13,5	456	15
			44	Az16x44	24,5	269	11	379	15,5	465	19
			51	Az16x51	22	275	12,5	385	17,5	484	22
20	10	4,0 x 2,4	64	Az16x64	16,6	265	16	381	23	415	25
			76	Az16x76	14,7	279	19	382	26	441	30
			89	Az16x89	12,2	268	22	378	31	463	38
			102	Az16x102	11	275	25	385	35	462	42
			305	Az16x305	3,8	288	76	402	106	456	120
			25	Az19x25	87,3	541	6,2	759	8,7	873	10
			32	Az19x32	68,6	548	8	754	11	891	13
20	10	4,0 x 2,4	38	Az19x38	54,9	521	9,5	741	13,5	823	15
			44	Az19x44	46,1	507	11	714	15,5	829	18
			51	Az19x51	38,2	477	12,5	688	17,5	764	20
			64	Az19x64	30,4	486	16	699	23	729	24
			75	Az19x75	25,5	484	19	663	26	714	28
			89	Az19x89	22	484	22	582	31	726	33
			102	Az19x102	19,3	482	25	694	36	733	38
			115	Az19x115	17	493	29	680	40	731	43
			127	Az19x127	15,4	492	32	677	44	739	48
			152	Az19x152	12,7	482	38	673	53	749	59
			305	Az19x305	6,2	471	76	663	106	756	122

FORMA DE PEDIDO: Código
ORDER FORM: Code

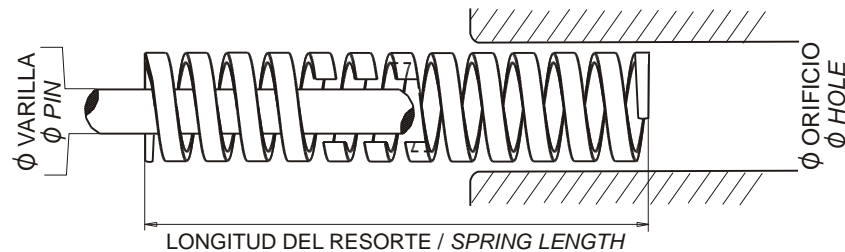
RESORTES MATRICERIA Color Azul. Carga media (II) DIE SPRINGS Blue colour. Medium load (II)



Diám. orificio Ø Hole	Diám. varilla Ø Pin	Secc. hilo Thread section	Long. Length	Cod. Code	Const. Constant.	Deflexión recom. 30% Recomended deflection 30%		Deflexión máx. 40% Maximal deflection 40%		Deflexión al bloqueo aprox. Deflection as block	
						N/1 mm	N	mm	N	mm	N
25	12,5	5,3 x 3,1	25	Az26x25	160	992	6,2	1392	8,7	1600	10
			32	Az26x32	122	976	8	1342	11	1586	13
			38	Az26x38	96,1	913	9,5	1297	13,5	1441	15
			44	Az26x44	80,4	884	11	1246	15,5	1447	18
			51	Az26x51	70,6	883	12,5	1235	17,5	1412	20
			64	Az26x64	55	880	16	1265	23	1320	24
			76	Az26x76	44,1	838	19	1146	26	1234	28
			89	Az26x89	37,8	831	22	1171	31	1247	33
			102	Az26x102	33,3	832	25	1198	36	1265	38
			115	Az26x115	28,9	838	29	1156	40	1242	43
			127	Az26x127	26,2	841	32	1157	44	1262	48
			152	Az26x152	22	836	38	1166	53	1298	59
			178	Az26x178	18,8	828	44	1165	62	1297	69
			203	Az26x203	16,5	841	51	1171	71	1303	79
305	Az26x305	11	836	76	1177	107	1342	122			
32	16	6,8 x 4,0	38	Az32x38	159	1510	9,5	2146	13,5	2385	15
			44	Az32x44	133	1463	11	2061	15,5	2394	18
			51	Az32x51	109	1362	12,5	1907	17,5	2180	20
			64	Az32x64	86,3	1380	16	1984	23	2157	24
			76	Az32x76	70,6	1341	19	1835	26	1976	28
			89	Az32x89	61,8	1359	22	1915	31	2039	33
			102	Az32x102	53	1325	25	1908	36	2014	38
			115	Az32x115	46,1	1336	29	1844	40	1982	43
			127	Az32x127	42,1	1347	32	1852	44	2020	48
			152	Az32x152	35,3	1341	38	1870	53	2082	59
			178	Az32x178	29,4	1293	44	1822	62	2028	69
			203	Az32x203	25,4	1295	51	1803	71	2006	79
			254	Az32x254	20,2	1272	63	1777	88	1999	99
			305	Az32x305	17	1292	76	1819	107	2074	122
40	20	8,1 x 4,8	51	Az38x51	161	2012	12,5	2817	17,5	3220	20
			64	Az38x64	122	1952	16	2806	23	3050	24
			76	Az38x76	102	1938	19	2652	26	2856	28
			89	Az38x89	84,3	1854	22	2613	31	2781	33
			102	Az38x102	73,5	1837	25	2646	36	2793	38
			115	Az38x115	64,7	1876	29	2588	40	2782	43
			127	Az38x127	57,8	1849	32	2543	44	2774	48
			152	Az38x152	48	1824	38	2544	53	2832	59
			178	Az38x178	42	1848	44	2604	62	2898	69
			203	Az38x203	37,2	1897	51	2641	71	2938	79
			254	Az38x254	28,9	1820	63	2543	88	2861	99
305	Az38x305	23,7	1801	76	2535	107	2891	122			

FORMA DE PEDIDO: Código
ORDER FORM: Code

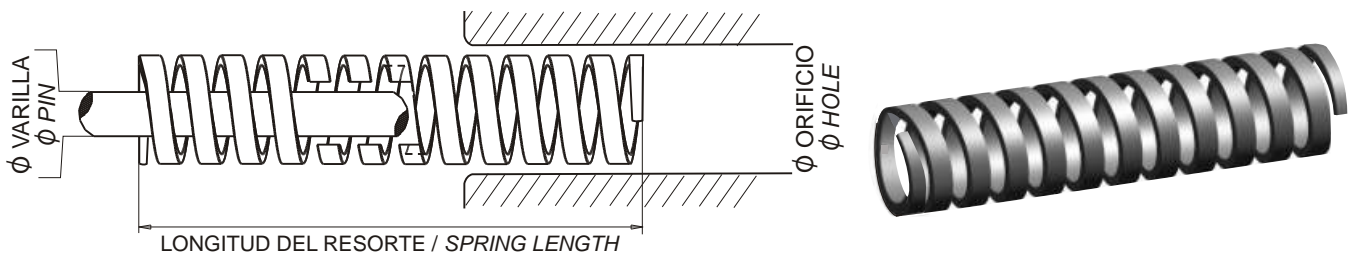
RESORTES MATRICERIA Color Azul. Carga media (III)
DIE SPRINGS Blue colour. Medium load (III)



Diám. orificio Ø Hole	Diám. varilla Ø Pin	Secc. hilo Thread section	Long. Length	Cod. Code	Const. Constant.	Deflexión recom. 30% Recommended deflection 30%		Deflexión máx. 40% Maximal deflection 40%		Deflexión al bloqueo aprox. Deflection as block	
						N/1 mm	N mm	N	mm	N	mm
50	25	10,9 x 6,0	64	Az51x64	198	3168	16	4554	23	4752	24
			76	Az51x76	162	3078	19	4212	26	4536	28
			89	Az51x89	135	2970	22	4185	31	4455	33
			102	Az51x102	117	2925	25	4212	36	4446	38
			115	Az51x115	103	2987	29	4120	40	4429	43
			127	Az51x127	93,2	2982	32	4100	44	4473	48
			152	Az51x152	77,5	2945	38	4107	53	4572	59
			178	Az51x178	66,7	2934	44	4135	62	4602	69
			203	Az51x203	56,9	2902	51	4039	71	4495	79
			254	Az51x254	46,1	2904	63	4056	88	4563	99
			305	Az51x305	37,6	2857	76	4023	107	4587	122
63	38	9,3 x 1,5	76	Az63x76	311	5909	19	8086	26	8708	28
			89	Az63x89	259	5698	22	8029	31	8547	33
			102	Az63x102	220	5500	25	7920	36	8360	38
			115	Az63x115	187	5423	29	7480	40	8041	43
			127	Az63x127	167	5344	32	7348	44	8016	48
			152	Az63x152	136	5168	38	7208	53	8024	59
			178	Az63x178	115	5060	44	7130	62	7935	69
			203	Az63x203	100	5100	51	7100	71	7900	79
			254	Az63x254	78,4	4939	63	6899	88	7761	99
						305	Az63x305	64,7	4917	76	6922

FORMA DE PEDIDO: Código
ORDER FORM: Code

RESORTES MATRICERIA Color Rojo. Carga fuerte (I) DIE SPRINGS Red colour. Heavy load (I)



Diám. orificio Ø Hole mm	Diám. varilla Ø Pin mm	Secc. hilo Thread section	Long. Length mm	Cod. Code	Const.	Deflexión recom. 30% Recommended deflection 30%		Deflexión máx. 40% Maximal deflection 40%		Deflexión al bloqueo aprox. Deflection as block	
					Constant. N/1 mm	N	mm	N	mm	N	mm
10	5	1,9 x 1,5	25	R10x25	21.5	107	5	161	7.5	193	9
			32	R10x32	19.6	125	6.4	188	9.6	235	12
			38	R10x38	14.7	111	7.6	167	11.4	205	14
			44	R10x44	12.7	114	9	171	13.5	215	17
			51	R10x51	10.7	107	10	160	15	214	20
			64	R10x64	8.8	114	13	171	19.5	202	23
			76	R10x76	6.8	102	15	153	22.5	183	27
13	6,3	2,4 x 2,0	305	R10x305	1.7	103	61	154	91	207	122
			25	R13x25	40.2	201	5	301	7.5	321	8
			32	R13x32	33.3	213	6.4	319	9.6	366	11
			38	R13x38	28.4	215	7.6	323	11.4	369	13
			44	R13x44	23.5	211	9	317	13.5	252	15
			51	R13x51	19.6	196	10	294	15	333	17
			64	R13x64	14.7	191	13	286	19.5	323	22
16	8	3,0 x 2,4	76	R13x76	12.7	190	15	285	22.5	317	25
			305	R13x305	3.1	189	61	282	91	372	120
			25	R16x25	70.6	353	5	529	7.5	706	10
			32	R16x32	58.8	376	6.4	564	9.6	705	12
			38	R16x38	48	364	7.6	547	11.4	768	16
			44	R16x44	39.2	352	9	529	13.5	744	19
			51	R16x51	35.5	353	10	529	15	741	21
20	10	4,0 x 3,2	64	R16x64	26.5	344	13	516	19.5	662	25
			76	R16x76	22.5	337	15	506	22.5	675	30
			89	R16x89	19.6	352	18	529	27	705	36
			305	R16x305	5.8	353	91	527	91	684	118
			25	R19x25	226	1130	5	1695	7.5	2034	9
			32	R19x32	174	1113	6.4	1670	9.6	1914	11
			38	R19x38	139	1056	7.6	1584	11.4	1807	13
20	10	4,0 x 3,2	44	R19x44	115	1035	9	1552	13.5	1725	15
			51	R19x51	100	1000	10	1500	15	1800	18
			64	R19x64	78.5	1020	13	1530	19.5	1727	22
			76	R19x76	64.7	970	15	1455	22.5	1682	26
			89	R19x89	53.9	970	18	1455	27	1670	31
			102	R19x102	47	940	20	1410	30	1692	36
			115	R19x115	42.1	968	23	1431	34	1726	41
			127	R19x127	37.2	930	25	1413	38	1674	45
			152	R19x152	30.9	927	30	1390	45	1668	54
			305	R19x305	15.1	921	61	1374	91	1630	108

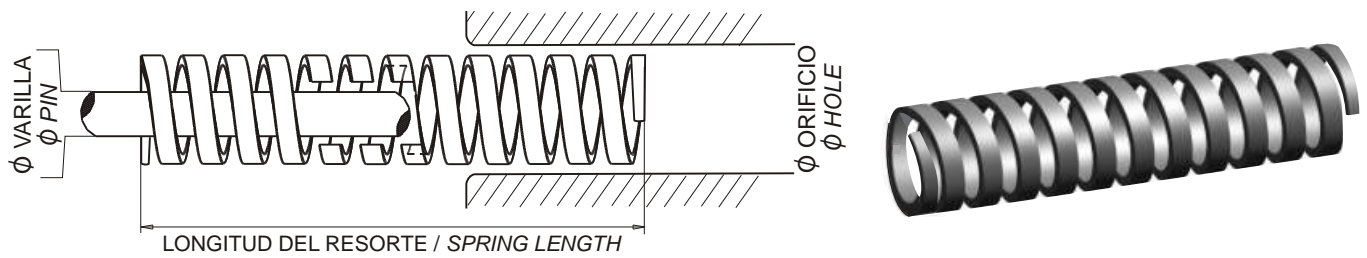
FORMA DE PEDIDO: Código
ORDER FORM: Code

RESORTES MATRICERIA Color Rojo. Carga fuerte (II) www.gerfa-tools.nl
DIE SPRINGS Red colour. Heavy load (II)

Diám. orificio Ø Hole	Diám. varilla Ø Pin	Secc. hilo Thread section	Long. Length	Cod. Code	Const.	Deflexión recom. 30%		Deflexión máx. 40%		Deflexión al bloqueo aprox.	
					Constant.	Recommended deflection 30%	Maximal deflection 40%	N	mm	N	mm
mm	mm		mm		N/1 mm	N	mm	N	mm	N	mm
25	12.5	5,6 x 4,1	32	R26x32	275	1760	6.4	2640	9.6	3025	11
			38	R26x38	225	1710	7.6	2565	11.4	3150	14
			44	R26x44	189	1701	9	2551	13.5	3024	16
			51	R26x51	161	1610	10	2415	15	3059	19
			64	R26x64	125	1625	13	2437	19.5	2875	23
			76	R26x76	101	1515	15	2272	22.5	2727	27
			89	R26x89	86.3	1553	18	2330	27	2847	33
			102	R26x102	74.5	1490	20	2235	30	2831	38
			115	R26x115	66.7	1534	23	2267	34	2868	43
			127	R26x127	59.8	1495	25	2272	38	2810	47
			152	R26x152	49	1470	30	2205	45	2793	57
			178	R26x178	42.1	1473	35	2231	53	2820	67
			203	R26x203	36.3	1452	40	2214	61	2795	77
305	R26x305	24.5	1494	61	2229	91	2817	115			
32	16	6,9 x 5,3	38	R32x38	382	2903	7.6	4354	11.4	5348	14
			44	R32x44	316	2844	9	4266	13.5	5056	16
			51	R32x51	271	2710	10	4065	15	4878	18
			64	R32x64	211	2743	13	4114	19.5	4853	23
			76	R32x76	176	2640	15	3960	22.5	4752	27
			89	R32x89	145	2610	18	3915	27	4785	33
			102	R32x102	125	2500	20	3750	30	4625	37
			115	R32x115	109	2507	23	3706	34	4796	44
			127	R32x127	99	2475	25	3762	38	4653	47
			152	R32x152	81.4	2442	30	3663	45	4558	56
			178	R32x178	68.6	2401	35	3635	53	4527	66
			203	R32x203	60	2400	40	3660	61	4620	77
			254	R32x254	48	2400	50	3648	76	4560	95
305	R32x305	39.2	2391	61	3567	91	4508	115			
40	20	8,4 x 6,2	50	R38x50	347	3470	10	5205	15	6593	19
			64	R38x64	262	3406	13	5109	19.5	6288	24
			76	R38x76	222	3360	15	5040	22.5	6048	27
			89	R38x89	187	3366	18	5049	27	6171	33
			102	R38x102	163	3260	20	4890	30	6194	38
			115	R38x115	142	3266	23	4828	34	6106	43
			127	R38x127	128	3200	25	4864	38	6144	48
			152	R38x152	105	3150	30	4725	45	6090	58
			178	R38x178	89.2	3122	35	4727	53	6065	68
			203	R38x203	77.5	3100	40	4727	61	6045	78
			254	R38x254	61.8	3090	50	4696	76	6118	99
			305	R38x305	51	3111	61	4641	91	6120	120
			50	25	11,3 x 7,4	64	R51x64	412	5356	13	8034
76	R51x76	332				4980	15	7470	22.5	8964	27
89	R51x89	284				5112	18	7668	27	9088	32
102	R51x102	243				4860	20	7290	30	8991	37
115	R51x115	212				4876	23	7208	34	8904	42
127	R51x127	189				4725	25	7182	38	8883	47
152	R51x152	153				4590	30	6885	45	8874	58
178	R51x178	131				4585	35	6943	53	8908	68
203	R51x203	114				4560	40	6854	61	8892	78
254	R51x254	89.2				4460	50	6779	76	8741	98
305	R51x305	72.5				4422	61	6597	91	8700	120

FORMA DE PEDIDO: Código
ORDER FORM: Code

RESORTES MATRICERIA Color Amarillo. Carga extra-fuerte (I) DIE SPRINGS Yellow colour. Extra-heavy load (I)



Diám. orificio Ø Hole	Diám. varilla Ø Pin	Secc. hilo Thread section	Long. Length mm	Cod. Code	Const.	Deflexión recom. 30%		Deflexión máx. 40%		Deflexión al bloqueo aprox.	
					Constant. N/1 mm	Recommended deflection 30% N	mm	Maximal deflection 40% N	mm	Deflection as block N	mm
10	5	1,9 x 1,5	25	A10x25	34.3	144	4.2	212	6.2	274	8
			32	A10x32	25.5	137	5.4	204	8	255	10
			38	A10x38	21.5	139	6.5	204	9.5	258	12
			44	A10x44	17.8	135	7.6	199	11.2	249	14
			51	A10x51	15.6	132	8.5	195	12.5	249	16
			64	A10x64	12.2	134	11	195	16	244	20
			76	A10x76	10.2	132	13	193	19	244	24
			305	A10x305	2.4	134	52	192	76	261	109
13	6,3	2,3 x 2,2	25	A13x25	59.8	251	4.2	370	6.2	538	9
			32	A13x32	45.1	243	5.4	360	8	496	11
			38	A13x38	36.3	246	6.5	345	9.5	471	13
			44	A13x44	30.4	231	7.6	340	11.2	486	16
			51	A13x51	27.4	232	8.5	342	12.5	493	18
			64	A13x64	22	242	11	352	16	484	22
			76	A13x76	18.2	236	13	345	19	491	27
			305	A13x305	4.2	218	52	320	76	483	115
16	8	3,2 x 2,7	25	A16x25	124	520	4.2	768	6.2	1116	9
			32	A16x32	93.2	503	5.4	745	8	1025	11
			38	A16x38	76.5	497	6.5	726	9.5	994	13
			44	A16x44	64.7	491	7.6	724	11.2	970	15
			51	A16x51	55	467	8.5	687	12.5	935	17
			64	A16x64	43.1	474	11	689	16	948	22
			76	A16x76	36.3	472	13	689	19	944	26
			89	A16x89	30.4	456	15	668	22	942	31
			102	A16x102	27	459	17	675	25	945	35
			305	A16x305	8.7	452	52	661	76	930	107
20	10	4,1 x 3,7	25	A19x25	347	1457	4.2	2151	6.2	3123	9
			32	A19x32	250	1350	5.4	2000	8	2750	11
			38	A19x38	198	1287	6.5	1881	9.5	2574	13
			44	A19x44	166	1261	7.6	1859	11.2	2490	15
			51	A19x51	142	1207	8.5	1775	12.5	2414	17
			64	A19x64	111	1221	11	1776	16	2331	21
			76	A19x76	93.2	1211	13	1770	19	2330	25
			89	A19x89	78.5	1177	15	1727	22	2433	31
			102	A19x102	67.6	1149	17	1690	25	2433	36
			115	A19x115	58.8	1176	20	1705	29	2352	40
			127	A19x127	53	1166	32	1696	32	2332	44
			152	A19x152	43.1	1120	26	1637	26	2241	52
			305	A19x305	21	1092	52	1596	52	2247	107

FORMA DE PEDIDO: Código
ORDER FORM: Code

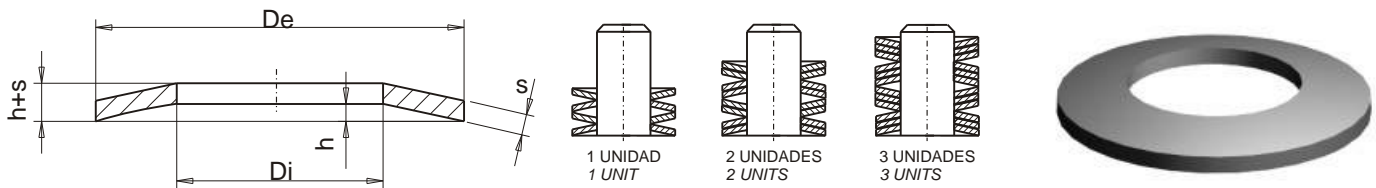
RESORTES MATRICERIA Color Amarillo. Carga extra-fuerte (II)
DIE SPRINGS Yellow colour. Extra-heavy load (II)

Diám. orificio Ø Hole	Diám. varilla Ø Pin	Secc. hilo Thread section	Long. Length	Cod. Code	Const.	Deflexión recom. 30%		Deflexión máx. 40%		Deflexión al bloque aprox.	
					Constant.	Recomended deflection 30%	Maximal deflection 40%	N	mm	N	mm
mm	mm		mm		N/1 mm	N	mm	N	mm	N	mm
25	12.5	5,6 x 4,6	32	A26x32	381	2057	5,4	3048	8	4191	11
			38	A26x38	301	1956	6,5	2859	9,5	3913	13
			44	A26x44	247	1877	7,6	2766	11,2	3705	15
			51	A26x51	207	1759	8,5	2587	12,5	3519	17
			64	A26x64	161	1771	11	2576	16	3381	21
			76	A26x76	131	1703	13	2489	19	3275	25
			89	A26x89	110	1650	15	2420	22	3410	31
			102	A26x102	96,1	1633	17	2402	25	3459	36
			115	A26x115	85,3	1706	20	2473	29	3412	40
			127	A26x127	78,5	1683	22	2448	32	3442	45
			152	A26x152	62,7	1630	26	2382	38	3385	54
			178	A26x178	54	1620	30	2376	44	3402	63
			203	A26x203	47	1598	34	2350	50	3243	69
305	A26x305	30,4	1580	52	2310	76	3313	109			
32	16	7,2 x 5,6	38	A32x38	519	3373	6,5	4930	9,5	6747	13
			44	A32x44	427	3245	7,6	4782	11,2	6405	15
			51	A32x51	361	3068	8,5	4512	12,5	6137	17
			64	A32x64	282	3102	11	4512	16	5922	21
			76	A32x76	225	2925	13	4275	19	5625	25
			89	A32x89	189	2835	15	4158	22	5859	31
			102	A32x102	160	2720	17	4000	25	5600	35
			115	A32x115	142	2840	20	4118	29	5680	40
			127	A32x127	128	2816	22	4096	32	5632	44
			152	A32x152	104	2704	26	3952	38	5512	53
			178	A32x178	89,2	2676	30	3924	44	5530	62
			203	A32x203	78,5	2669	34	3925	50	5573	71
			254	A32x254	61,8	2657	43	3893	63	5562	90
305	A32x305	51	2652	52	3876	76	5559	109			
40	20	8,7 x 7,3	51	A38x51	578	4913	8,5	7225	12,5	9248	16
			64	A38x64	445	4895	11	7120	16	9345	21
			76	A38x76	357	4641	13	6783	19	8925	25
			89	A38x89	292	4380	15	6424	22	8468	29
			102	A38x102	258	4386	17	6450	25	8772	34
			115	A38x115	227	4540	20	6583	29	8626	38
			127	A38x127	201	4422	22	6432	32	8643	43
			152	A38x152	164	4264	26	6232	38	8528	52
			178	A38x178	140	4200	30	6160	44	8540	61
			203	A38x203	120	4080	34	6000	50	8400	70
			254	A38x254	94,1	4046	43	5928	63	8374	89
			305	A38x305	78,4	4076	52	5958	76	8310	106
			50	25	11,4 x 9,1	64	A51x64	737	8107	11	11792
76	A51x76	588				7644	13	11172	19	14700	25
89	A51x89	496				7440	15	10912	22	14880	30
102	A51x102	442				7174	17	10550	25	14348	34
115	A51x115	368				7360	20	10672	29	14352	39
127	A51x127	324				7128	22	10368	32	13932	43
151	A51x151	263				6838	26	9994	38	13676	52
178	A51x178	226				6780	30	9944	44	13786	61
203	A51x203	197				6698	34	9850	50	13790	70
254	A51x254	155				6655	43	9765	63	13795	89
305	A51x305	126				6552	52	9576	76	13356	106

FORMA DE PEDIDO: Código
ORDER FORM: Code

MUELLES DE PLATILLO DIN 2093

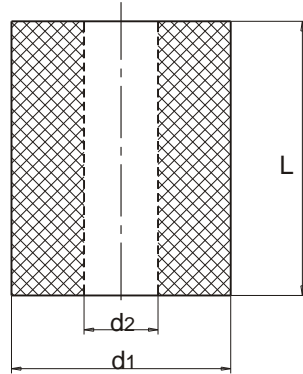
BELLEVILLE SPRINGS DIN 2093



De	Di	S	f 0,25 h		f 0,50 h		f 0,75 h		h	h + s
			f	P	f	P	f	P		
8	4.2	0.3	0.063	5.3	0.125	9.1	0.188	12	0.25	0.55
8	4.2	0.4	0.05	8	0.1	15	0.15	21.4	0.2	0.6
10	5.2	0.4	0.075	9	0.15	15.7	0.225	21.3	0.3	0.7
10	5.2	0.5	0.063	12.5	0.125	23.3	0.188	32.2	0.25	0.75
12.5	6.2	0.5	0.088	12.3	0.175	21.9	0.263	29.9	0.35	0.85
12.5	6.2	0.7	0.075	24.3	0.15	46.4	0.225	67	0.3	1
14	7.2	0.5	0.1	12.2	0.2	21.3	0.3	28.4	0.4	0.9
14	7.2	0.8	0.075	28.9	0.15	55.8	0.225	81	0.3	1.1
16	8.2	0.6	0.113	17.6	0.225	31.1	0.338	41.8	0.45	1.05
16	8.2	0.9	0.088	37.2	0.175	70.8	0.263	103	0.35	1.25
18	9.2	0.7	0.125	23.8	0.25	42.4	0.375	57.6	0.5	1.2
18	9.2	1	0.1	45.9	0.2	88	0.3	128	0.4	1.4
20	10.2	0.8	0.136	31.2	0.275	55.8	0.143	76.2	0.55	1.35
20	10.2	1.1	0.113	56.2	0.225	107	0.338	155	0.45	1.55
22.5	11.2	0.8	0.163	31.4	0.325	54.4	0.488	72.2	0.65	1.45
22.5	11.2	1.25	0.125	70.7	0.25	136	0.375	197	0.5	1.75
25	12.2	0.9	0.175	37.3	0.35	65.6	0.525	87.7	0.7	1.6
25	12.2	1.5	0.138	106	0.275	204	0.413	298	0.55	2.05
28	14.2	1	0.2	48.5	0.4	84.6	0.6	113	0.8	1.8
28	14.2	1.5	0.163	105	0.325	201	0.488	289	0.65	2.15
31.5	16.3	1.25	0.225	80.4	0.45	143	0.675	194	0.9	2.15
31.5	16.3	1.75	0.175	142	0.4	272	0.525	398	0.7	2.45
35.5	18.3	1.25	0.25	74.4	0.5	130	0.75	173	1	2.25
35.5	18.3	2	0.2	190	0.4	364	0.6	528	0.8	2.8
40	20.4	1.5	0.288	113	0.575	199	0.863	267	1.15	2.65
40	20.4	2.25	0.225	238.3	0.45	456	0.675	662	0.9	3.15
45	22.4	1.75	0.325	156	0.65	275	0.975	372	1.3	3.05
45	22.4	2.5	0.25	283	0.5	542	0.75	787	1	3.5
50	25.4	2	0.35	198	0.7	356	1.05	485	1.4	3.4
50	25.4	3	0.275	435	0.55	836	0.825	1220	1.1	4.1
56	28.5	2	0.4	194	0.8	340	1.2	452	1.6	3.6
56	28.5	3	0.325	420	0.65	805	0.975	1159	1.3	4.3
63	31	2.5	0.435	315	0.9	512	1.3	740	1.75	4.25
63	31	3.5	0.35	558	0.7	1070	1.05	1550	1.4	4.9
71	36	2.5	0.5	294	1	480	1.5	690	2	4.5
71	36	4	0.4	756	0.8	1450	1.2	2100	1.6	5.6
80	41	3	0.6	468	1.2	765	1.7	1100	2.3	5.3
80	41	5	0.45	1260	0.9	2415	1.3	3500	1.7	6.7
90	46	3.5	0.62	617	1.25	1000	1.85	1450	2.5	6
90	46	5	0.5	1152	1	2210	1.5	3200	2	7
100	51	3.5	0.7	574	1.4	935	2.1	1350	3.5	2.8
100	51	6	0.55	1764	1.1	3381	1.65	4900	2.2	8.2

FORMA DE PEDIDO: De X S
ORDER FORM: De X S

TUBO ADIPRENE "TAP"
POLYURETHANE SPRINGS "TAP"

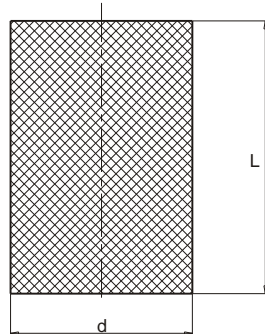


MATERIAL: *MATERIAL:* Poliuretano / Polyurethane
DUREZA: *HARDNESS :* 90 Shore A / 95 Shore A

d1	d2	L
16	6.5	250
20	8.5	250
25	10.5	250
32	13.5	250
40	13.5	250
50	17	250
63	17	250
80	21	250
100	21	250
150	25	250

FORMA DE PEDIDO: Dureza, $d_1 \times d_2 \times L$
ORDER FORM: Hardness, $d_1 \times d_2 \times L$

BARRA ADIPRENE "BAP"
POLYURETHANE SPRINGS "BAP"

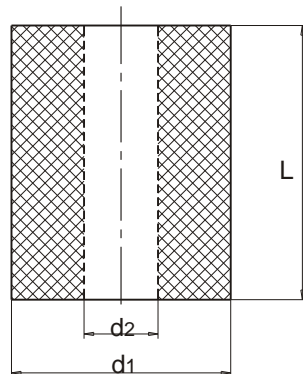


MATERIAL: *MATERIAL:* Poliuretano / Polyurethane
DUREZA: *HARDNESS :* 90 Shore A 95 Shore
 90 Shore A 95 Shore

d	L
16	250
20	250
25	250
32	250
40	250
45	250
50	250
60	250
70	250
80	250
100	250
110	250

FORMA DE PEDIDO: *Dureza, d x L*
ORDER FORM: *Hardness, d x L*

TUBO NEOPRENE "TNP" NEOPRENE SPRINGS "TNP"



MATERIAL: MATERIAL: Neopreno / Neoprene
DUREZA: HARDNESS : 70±3 Shore A / 70±3 Shore A

d2	d1	L
8.5	16	20
8.5	20	25
8.5	20	32
8.5	25	25
8.5	25	32
8.5	25	40
13.5	32	32
13.5	32	40
13.5	32	50
13.5	32	63
13.5	40	32
13.5	40	40
13.5	40	50
13.5	40	63
13.5	40	80
17	50	32
17	50	40
17	50	50
17	50	63
17	50	80
17	50	100
17	63	32
17	63	40
17	63	50
17	63	63
17	63	80
17	63	100
21	80	50
21	80	63
21	80	80
21	80	100
21	100	40
21	100	63
21	100	100

FORMA DE PEDIDO: d1 x d2 x L
ORDER FORM: d1 x d2 x L